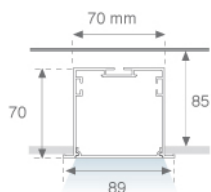


FIL 70

4781590



FIL + LED OPAL REC 4400 WW DALI WH.

Description:

Finition: Blanc mat RAL 9010

Dimensions: 1.162 x 89 x 70 mm

Poids: 2.667 g

Installation: Encastré

Mesures encastrement: 1,174 x 78 x 85 mm

SPÉCIFICATIONS TECHNIQUES:

Flux lumineux: 3.370 lm

°K : 3000

Plum: 30,7W

IRC : 80

Efficacité: 109,8 lm/w

MacAdam: 3

Type: MID POWER PHILIPS

Alimentation: 220-240V 50/60Hz

Durée de vie LED: 60.000 L80 B10

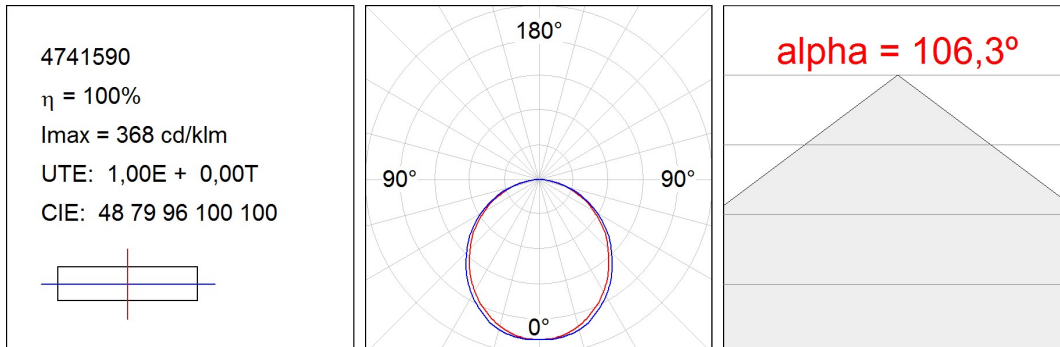
Équipement: Réglable DALI

Puissance: 28W

Tolérance de flux lumineux +/- 10%

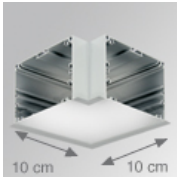


DONNÉES PHOTOMÉTRIQUES :



ACCESSOIRES :

Montage



Code produit:

4700120

4700123

Description:

FIL + ACC. REC 90° CORNER WH.

FIL + ACC. REC 90° CORNER GR.



Code produit:

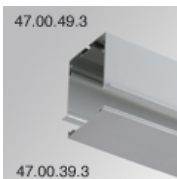
4700390

4700393

Description:

FIL + ACC. COVER X/MM WH.

FIL + ACC. COVER X/MM GR.



Code produit:

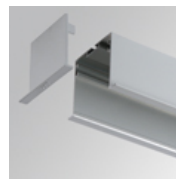
4700490

4700493

Description:

FIL + ACC. REC PROFILE X/MM WH.

FIL + ACC. REC PROFILE X/MM GR.



Code produit:

4700680

4700683

Description:

FIL + ACC. REC END COVER WH.

FIL + ACC. REC END COVER GR.



Code produit:

4806043

Description:

ACC. INTM JOINT



Code produit:

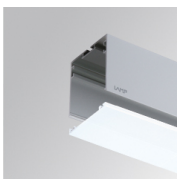
9600990

Description:

ACC. ELECTROSTATICS WRIST STRAP

ACCESSOIRES :

Optique



Code produit:

4700400

Description:

FIL + ACC. OPAL DIFFUSER X/MM

