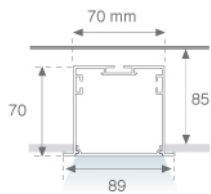


4780590

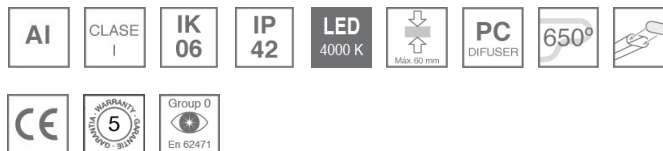


FIL + LED OPAL REC 4400 NW DALI WH.

Description:**Finition:** Blanc mat RAL 9010**Dimensions:** 1.162 x 89 x 70 mm**Poids:** 2.667 g**Installation:** Encastré**Mesures encastrement:** 1,174 x 78 x 85 mm

SPÉCIFICATIONS TECHNIQUES:
Flux lumineux: 3.545 lm**°K :** 4000**Plum:** 30,7W**IRC :** 80**Efficacité:** 115,5 lm/w**MacAdam:** 3**Type:** MID POWER PHILIPS**Alimentation:** 220-240V 50/60Hz**Durée de vie LED:** 60.000 L80 B10**Équipement:** Réglable DALI**Puissance:** 28W

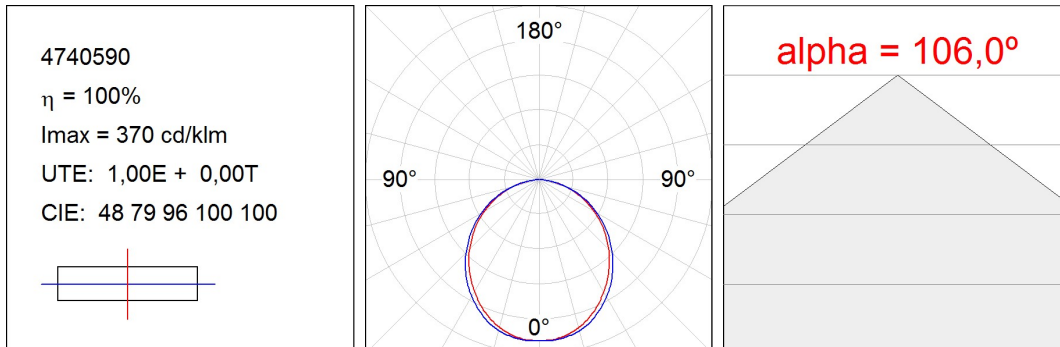
Tolérance de flux lumineux +/- 10%



4780590

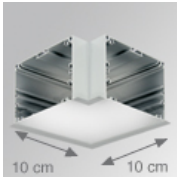
FIL + LED OPAL REC 4400 NW DALI WH.

DONNÉES PHOTOMÉTRIQUES :



ACCESSOIRES :

Montage



Code produit:

4700120

4700123

Description:

FIL + ACC. REC 90° CORNER WH.

FIL + ACC. REC 90° CORNER GR.



Code produit:

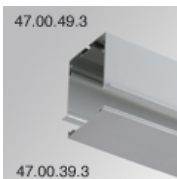
4700390

4700393

Description:

FIL + ACC. COVER X/MM WH.

FIL + ACC. COVER X/MM GR.



Code produit:

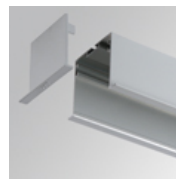
4700490

4700493

Description:

FIL + ACC. REC PROFILE X/MM WH.

FIL + ACC. REC PROFILE X/MM GR.



Code produit:

4700680

4700683

Description:

FIL + ACC. REC END COVER WH.

FIL + ACC. REC END COVER GR.



Code produit:

4806043

Description:

ACC. INTM JOINT



Code produit:

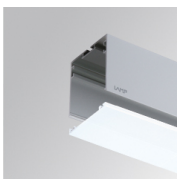
9600990

Description:

ACC. ELECTROSTATICS WRIST STRAP

ACCESSOIRES :

Optique



Code produit:

4700400

Description:

FIL + ACC. OPAL DIFFUSER X/MM

