

4780223


**FIL + LED TECH REC 2M 3200 NW DALI GR.**
**Description:**
**Finish:** Gloss grey

**Dimensions:** 2.000 x 70 x 70 mm

**Weight:** 4.247 g

**Installation:** Recessed

**Recessing measures:** 2,012 x 78 x 85 mm

**TECHNICAL SPECIFICATIONS:**
**Light output:** 3.060 lm

**°K :** 4000

**Plum:** 26,8W

**CRI :** 80

**Efficacy:** 114,1 lm/w

**MacAdam:** 3

**UGR:** 19

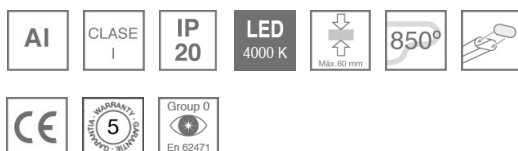
**Power Supply:** 220-240V 50/60Hz

**Type:** MID POWER NICHIA

**Gear:** Adjustable DALI

**LED Lifetime:** 50.000 L80 B10

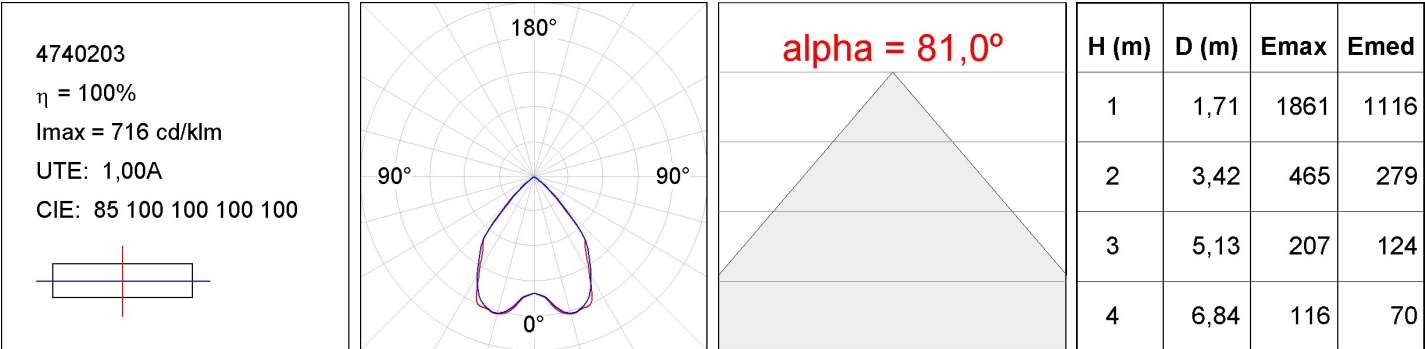
**Power:** 25W

*Light output tolerance +/- 10%*


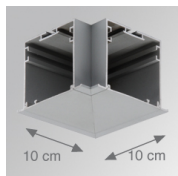
4780223

FIL + LED TECH REC 2M 3200 NW DALI GR.

PHOTOMETRIC DATA :



---

**ACCESORIES :**
**Assembly****Product code:**

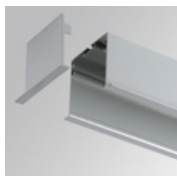
4700070

4700073

**Description:**

FIL + TECH ACC. REC 90° CORNER WH.

FIL + TECH ACC. REC 90° CORNER GR.

**Product code:**

4700680

4700683

**Description:**

FIL + ACC. REC END COVER WH.

FIL + ACC. REC END COVER GR.

**Product code:**

4806043

**Description:**

ACC. INTM JOINT

**Product code:**

9600990

**Description:**

ACC. ELECTROSTATICS WRIST STRAP

---

**ACCESORIES :**
**Optical****Product code:**

9600880

**Description:**

ACC. DIF. SOFT TECH OPAL