

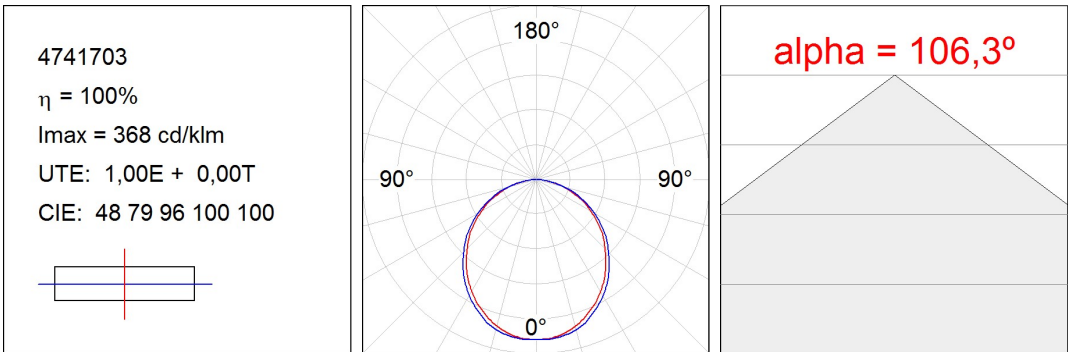
4741703

**FIL + LED OPAL REC 3900 WW GR.****Description:**

Recessed luminaire model FIL + LED OPAL REC 3900 WW GR., LAMP brand. Made of satin grey painted extruded aluminium with opal polycarbonate diffuser. Model for LED MID-POWER with warm white colour temperature and control gear included. IP42, IK06 protection rating. Insulation class I. Photobiological safety group 0.

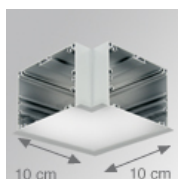
**Finish:** Gloss grey**Dimensions:** 1.743 x 89 x 70 mm**Weight:** 4.271 g**Installation:** Recessed**Recessing measures:** 1,755 x 78 x 85 mm**TECHNICAL SPECIFICATIONS:****Light output:** 2.988 lm**°K :** 3000**Plum:** 29,7W**CRI :** 80**Efficacy:** 100,6 lm/w**MacAdam:** 3**Type:** MID POWER PHILIPS**Power Supply:** 220-240V 50/60Hz**LED Lifetime:** 50.000 L80 B10**Gear:** Electronic**Power:** 25W**Light output tolerance +/- 10%**

PHOTOMETRIC DATA :



**ACCESORIES :**

**Assembly**

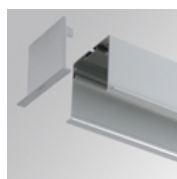


**Product code:**

4700123

**Description:**

FIL + ACC. REC 90° CORNER GR.



**Product code:**

4700683

**Description:**

FIL + ACC. REC END COVER GR.



**Product code:**

4806043

**Description:**

ACC. INTM JOINT



**Product code:**

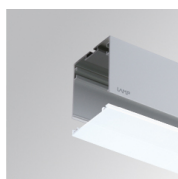
9600990

**Description:**

ACC. ELECTROSTATICS WRIST STRAP

**ACCESORIES :**

**Optical**



**Product code:**

4700400

**Description:**

FIL + ACC. OPAL DIFFUSER X/MM

