

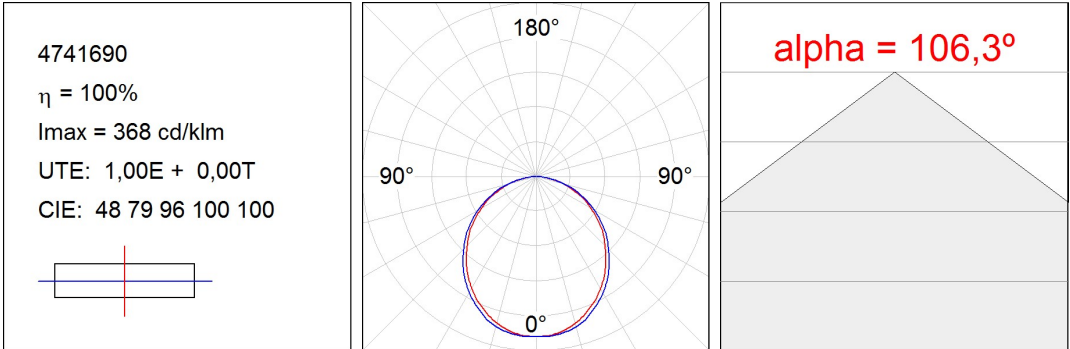
4741690

**FIL + LED OPAL REC 2600 WW WH.****Description:**

Recessed luminaire model FIL + LED OPAL REC 2600 WW WH., LAMP brand. Made of matt white painted extruded aluminium with opal polycarbonate diffuser. Model for LED MID-POWER with warm white colour temperature and control gear included. IP42, IK06 protection rating. Insulation class I. Photobiological safety group 0.

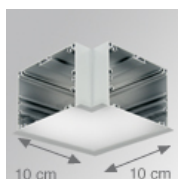
Finish: Matte white RAL 9010**Dimensions:** 1.162 x 89 x 70 mm**Weight:** 2.662 g**Installation:** Recessed**Recessing measures:** 1,174 x 78 x 85 mm**TECHNICAL SPECIFICATIONS:****Light output:** 1.992 lm**°K :** 3000**Plum:** 19,2W**CRI :** 80**Efficacy:** 103,8 lm/w**MacAdam:** 3**Type:** MID POWER PHILIPS**Power Supply:** 220-240V 50/60Hz**LED Lifetime:** 60.000 L80 B10**Gear:** Electronic**Power:** 17W**Light output tolerance +/- 10%**

PHOTOMETRIC DATA :



ACCESORIES :

Assembly

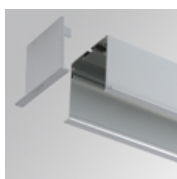


Product code:

4700120

Description:

FIL + ACC. REC 90° CORNER WH.



Product code:

4700680

Description:

FIL + ACC. REC END COVER WH.



Product code:

4806043

Description:

ACC. INTM JOINT



Product code:

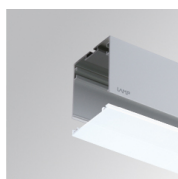
9600990

Description:

ACC. ELECTROSTATICS WRIST STRAP

ACCESORIES :

Optical



Product code:

4700400

Description:

FIL + ACC. OPAL DIFFUSER X/MM

