

**FIL + LED TECH**

4741220 **FIL + LED TECH REC 2M 3200 WW WH.**



**Description:**

Recessed structure model FIL + LED TECH REC 2M 3200 WW WH., LAMP brand. Made of matt white painted extruded aluminium. Model for MID-POWER LED with warm white colour temperature and control gear included, which consists of a two-phase reflection. Glare rating <math><19</math> (for 4h, 8h 70/50/20). Insulation class I. Photobiological safety group 0.

**Finish:** Matte white RAL 9010

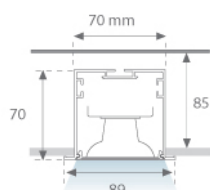
**Dimensions:** 2.000 x 70 x 70 mm

**Weight:** 4.247 g

**IEE :** A+

**Installation:** Recessed

**Recessing measures:** 2,012 x 78 x 85 mm



**Lamp:**

**Type:** MID POWER NICHIA

**°K :** 3000

**LED Lifetime:** 50.000 L80 B10

**CRI :** 80

**Power:** 25W

**MacAdam:** 3

**Electrical features:**

**Gear:** Electronic

**Power Supply:** 220-240V 50-60Hz

**Plum:** 26.8W

**Technical features:**



**Quality certificates:**



**Photometrical data:**

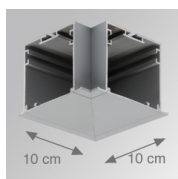
H (m)	D (m)	E <sub>max</sub>	E <sub>med</sub>
1	1,74	2091	1257
2	3,47	523	314
3	5,21	232	140
4	6,95	131	79

**alpha = 81,9°**

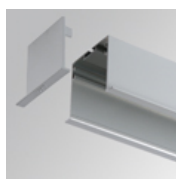
4741220  
 $\eta = 100\%$   
 $I_{max} = 689 \text{ cd/klm}$   
 UTE: 1,00B + 0,00T  
 CIE: 83 99 100 100 100

**Light output:** 3.060 lm    **UGR:** 19    **Efficacy:** 114,1 lm/w

**Assembly**



**Product code:** 4700070    **Description:** FIL + TECH ACC. REC 90° CORNER WH.  
 4700073    FIL + TECH ACC. REC 90° CORNER GR.



**Product code:** 4700680    **Description:** FIL + ACC. REC END COVER WH.  
 4700683    FIL + ACC. REC END COVER GR.



**Product code:** 4806043    **Description:** ACC. INTM JOINT



**Product code:** 9600990    **Description:** ACC. ELECTROSTATICS WRIST STRAP

**Optical**



**Product code:** 9600880    **Description:** ACC. DIF. SOFT TECH OPAL