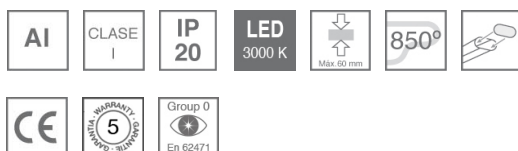


4741130

**FIL + LED TECH REC 1M 3200 WW WH.****Description:**

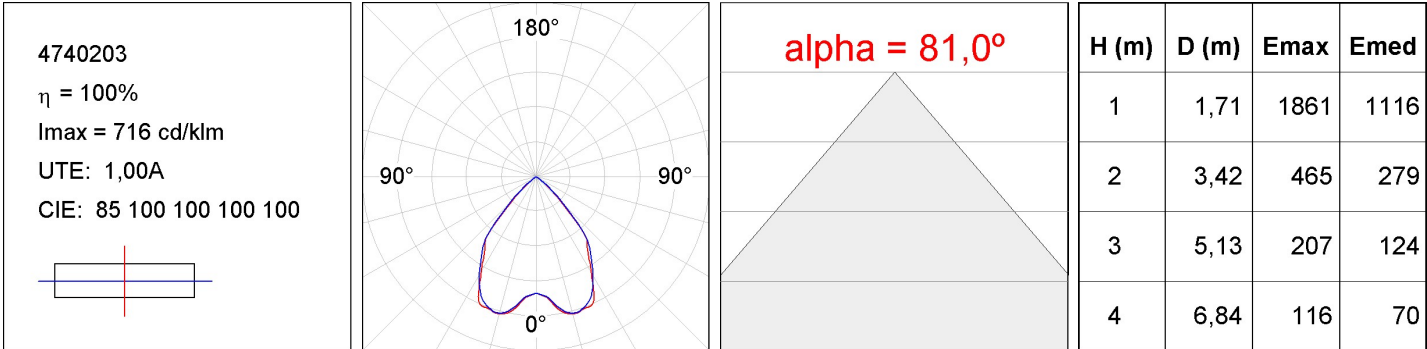
Recessed structure model FIL + LED TECH REC 1M 3200 WW WH., LAMP brand. Made of matt white painted extruded aluminium. Model for MID-POWER LED with warm white colour temperature and control gear included, which consists of a two-phase reflection. Glare rating <19 (for 4h, 8h 70/50/20). Insulation class I. Photobiological safety group 0.

**Finish:** Matte white RAL 9010**Dimensions:** 1.000 x 70 x 70 mm**Weight:** 2.124 g**Installation:** Recessed**Recessing measures:** 1,012 x 78 x 85 mm**TECHNICAL SPECIFICATIONS:****Light output:** 2.400 lm**°K :** 3000**Plum:** 23,6W**CRI :** 80**Efficacy:** 101,6 lm/w**UGR:** 19**MacAdam:** 3**Type:** MID POWER NICHIA**Power Supply:** 220-240V 50/60Hz**LED Lifetime:** 50.000 L80 B10**Gear:** Electronic**Power:** 21W**Light output tolerance +/- 10%**

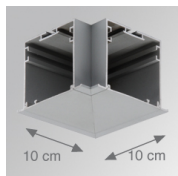
4741130

FIL + LED TECH REC 1M 3200 WW WH.

PHOTOMETRIC DATA :



---

**ACCESORIES :****Assembly****Product code:**

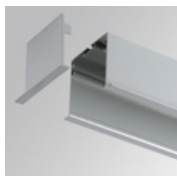
4700070

4700073

**Description:**

FIL + TECH ACC. REC 90° CORNER WH.

FIL + TECH ACC. REC 90° CORNER GR.

**Product code:**

4700680

4700683

**Description:**

FIL + ACC. REC END COVER WH.

FIL + ACC. REC END COVER GR.

**Product code:**

4806043

**Description:**

ACC. INTM JOINT

**Product code:**

9600990

**Description:**

ACC. ELECTROSTATICS WRIST STRAP

---

**ACCESORIES :****Optical****Product code:**

9600880

**Description:**

ACC. DIF. SOFT TECH OPAL