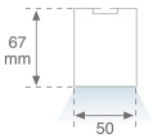
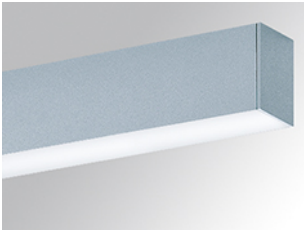


14781400




---

**FIL LED G2 OPAL SUS 3000 WW DALI WH.**


---

**Description:****Finition:** Blanc mat RAL 9010**Dimensions:** 1.137 x 50 x 67 mm**Poids:** 2.114 g**Installation:** Surface

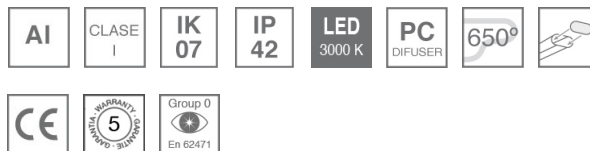
---

**SPÉCIFICATIONS TECHNIQUES:**

<b>Flux lumineux:</b>	1.900 lm	<b>°K :</b>	3000
<b>Plum:</b>	21,3W	<b>IRC :</b>	80
<b>Efficacité:</b>	89,2 lm/w	<b>MacAdam:</b>	3
<b>Type:</b>	MID POWER TRIDONIC	<b>Alimentation:</b>	220-240V 50/60Hz
<b>Durée de vie LED:</b>	50000 L80 B10	<b>Équipement:</b>	Réglable DALI
<b>Puissance:</b>	19W		

*Tolérance de flux lumineux +/- 10%*

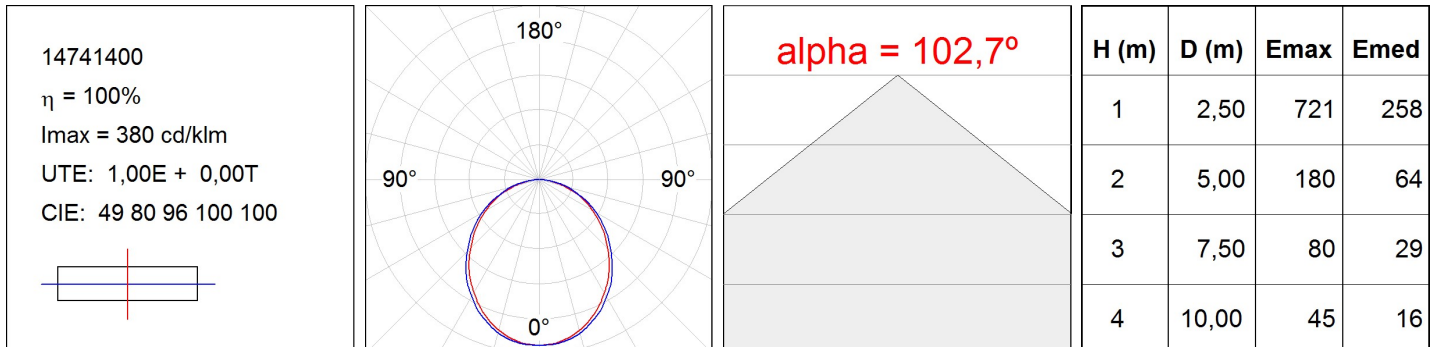
---



14781400

FIL LED G2 OPAL SUS 3000 WW DALI WH.

## DONNÉES PHOTOMÉTRIQUES :



ACCESSOIRES :

Montage

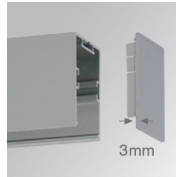


**Code produit:**

4700420  
4700423

**Description:**

FIL ACC. 90° WALL CORNER WH.  
FIL ACC. 90° WALL CORNER GR.

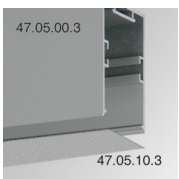


**Code produit:**

4700440  
4700443

**Description:**

FIL ACC. SUS END COVER PC WH.  
FIL ACC. SUS END COVER PC GR.

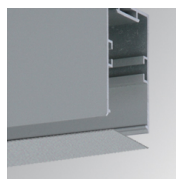


**Code produit:**

4705000  
4705003

**Description:**

FIL ACC. SUS PROFILE X/MM WH.  
FIL ACC. SUS PROFILE X/MM GR.

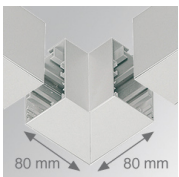


**Code produit:**

4705100  
4705103

**Description:**

FIL ACC. COVER X/MM WH.  
FIL ACC. COVER X/MM GR.

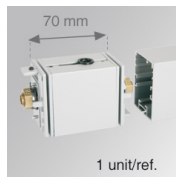


**Code produit:**

4705200  
4705203

**Description:**

FIL ACC. SUS 90° CORNER WH.  
FIL ACC. SUS 90° CORNER GR.

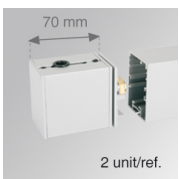


**Code produit:**

4705500  
4705503

**Description:**

FIL ACC. SUS REV INTM COVER WH.  
FIL ACC. SUS REV INTM COVER GR.



**Code produit:**

4705510  
4705513

**Description:**

FIL ACC. SUS REV END COVER WH.  
FIL ACC. SUS REV END COVER GR.

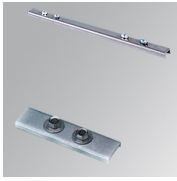


**Code produit:**

9600990

**Description:**

ACC. ELECTROSTATICS WRIST STRAP



**Code produit:**

9606010

**Description:**

ACC. INTM JOINT B

---

**ACCESSOIRES :**

**Suspension**



**Code produit:**

9601010

9601020

9601050

9601100

**Description:**

ACC. RIGID SUSP 100MM WH.

ACC. RIGID SUSP 250MM WH.

ACC. RIGID SUSP 500MM WH.

ACC. RIGID SUSP 1000MM WH.



**Code produit:**

9601313

9601343

**Description:**

ACC. QUICK STEEL CABLE 1M NK.

ACC. QUICK STEEL CABLE 4M NK.



**Code produit:**

9607610

9607613

**Description:**

ACC. SUR FIXING WH.

ACC. SUR FIXING NK.



**Code produit:**

9608590

**Description:**

ACC. RIGID SUSP FIXING JOINT WH.



**Code produit:**

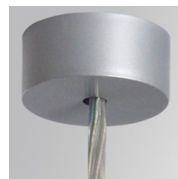
9608640

9658640

**Description:**

ACC. ELEC 3P SUSP WH.

ACC. ELEC 5P SUSP WH.



**Code produit:**

9608643

9658643

**Description:**

ACC. ELEC 3P SUSP GR.

ACC. ELEC 5P SUSP GR.



**Code produit:**  
9621000

**Description:**  
ACC. ELECMEC SUR FIXING WH.



**Code produit:**  
9621003

**Description:**  
ACC. ELECMEC SUR FIXING GR.



**Code produit:**  
9621010  
9621020  
9621050  
9621100

**Description:**  
ACC. ELECMEC RIGID SUSP 100MM WH.  
ACC. ELECMEC RIGID SUSP 250MM WH.  
ACC. ELECMEC RIGID SUSP 500MM WH.  
ACC. ELECMEC RIGID SUSP 1000MM WH.



**Code produit:**  
9621013  
9621023  
9621053  
9621103

**Description:**  
ACC. ELECMEC RIGID SUSP 100MM GR.  
ACC. ELECMEC RIGID SUSP 250MM GR.  
ACC. ELECMEC RIGID SUSP 500MM GR.  
ACC. ELECMEC RIGID SUSP 1000MM GR.



**Code produit:**  
9621310  
9621340

**Description:**  
ACC. ELECMEC QUICK SUSP 1M WH.  
ACC. ELECMEC QUICK SUSP 4M WH.



**Code produit:**  
9621313  
9621343

**Description:**  
ACC. ELECMEC QUICK SUSP 1M GR.  
ACC. ELECMEC QUICK SUSP 4M GR.



**Code produit:**  
9681310  
9681340

**Description:**  
ACC. ELECMEC QUICK SUSP 1M 5P WH.  
ACC. ELECMEC QUICK SUSP 4M 5P WH.



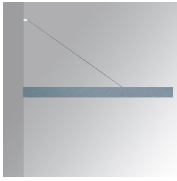
**Code produit:**  
9681313  
9681343

**Description:**  
ACC. ELECMEC QUICK SUSP 1M 5P GR.  
ACC. ELECMEC QUICK SUSP 4M 5P GR.

---

**ACCESSOIRES :**

**Support**

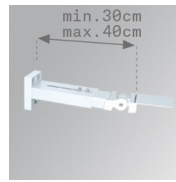


**Code produit:**

4706413

**Description:**

FIL ACC. PERP WALL BRACKET

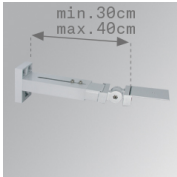


**Code produit:**

9600050

**Description:**

ACC. ADJ EXTEN WALL ARM WH.

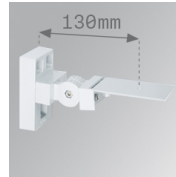


**Code produit:**

9600053

**Description:**

ACC. ADJ EXTEN WALL ARM GR.

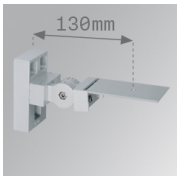


**Code produit:**

9600060

**Description:**

ACC. ADJ WALL ARM WH.



**Code produit:**

9600063

**Description:**

ACC. ADJ WALL ARM GR.



**Code produit:**

9607450

**Description:**

ACC. WALL BRACKET 75MM WH.



**Code produit:**

9607453

**Description:**

ACC. WALL BRACKET 75MM GR.



**Code produit:**

9607460

**Description:**

ACC. WALL BRACKET 300MM WH.



**Code produit:**

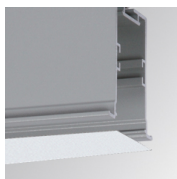
9607463

**Description:**

ACC. WALL BRACKET 300MM GR.

**ACCESSOIRES :**

**Optique**



**Code produit:**

4700590

**Description:**

FIL ACC. OPAL DIFFUSER X/MM