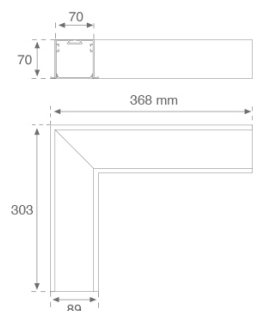
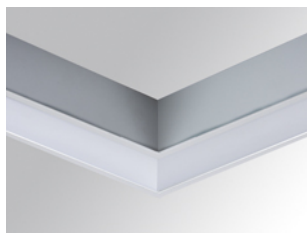


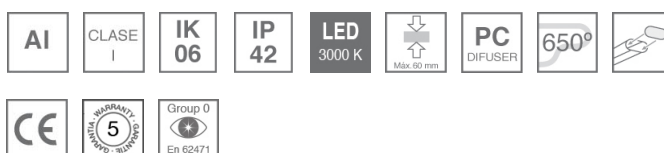
14741100

**FIL + LED CORNER OPAL REC 1300 WW WH.****Description:**

Recessed luminaire 90° corner model FIL + LED CORNER OPAL REC 1300 WW WH., LAMP brand. Made of matt white painted extruded aluminium with opal polycarbonate diffuser. Model for LED MID-POWER with warm white colour temperature and control gear included. IP42, IK06 protection rating. Insulation class I. Photobiological safety group 0.

Finish: Matte white RAL 9010**Weight:** 1.500 g**Installation:** Recessed**TECHNICAL SPECIFICATIONS:**

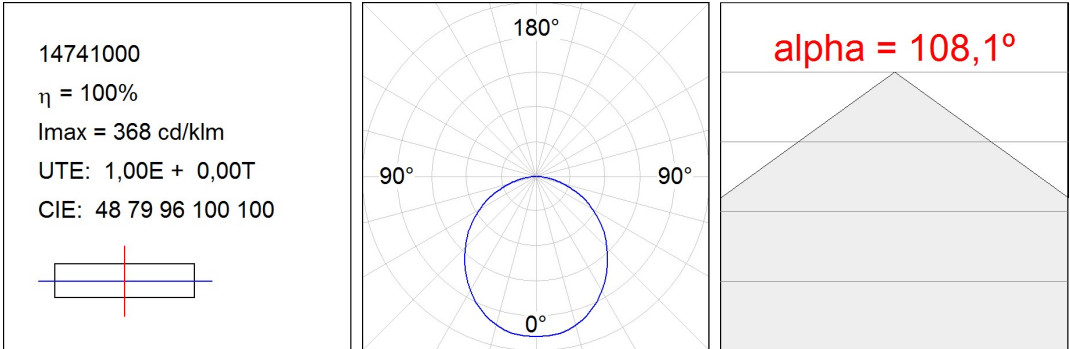
Light output:	996 lm	°K :	3000
Plum:	10,1W	CRI :	80
Efficacy:	98,6 lm/w	MacAdam:	3
Type:	MID POWER PHILIPS	Power Supply:	220-240V 50/60Hz
LED Lifetime:	50000 L80 B10	Gear:	Electronic
Power:	9W		

Light output tolerance +/- 10%

14741100

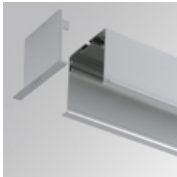
FIL + LED CORNER OPAL REC 1300 WW WH.

PHOTOMETRIC DATA :



ACCESORIES :

Assembly



Product code:
4700680
4700683

Description:
FIL + ACC. REC END COVER WH.
FIL + ACC. REC END COVER GR.



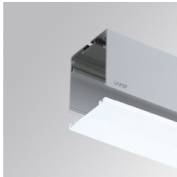
Product code: 4806043
Description: ACC. INTM JOINT



Product code: 9600990
Description: ACC. ELECTROSTATICS WRIST STRAP

ACCESORIES :

Optical



Product code: 4700400
Description: FIL + ACC. OPAL DIFFUSER X/MM