

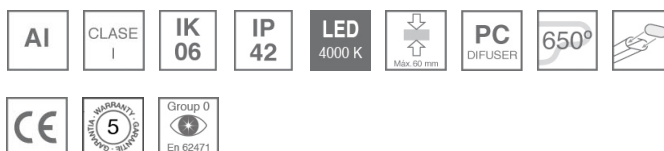
14740733

**FIL + LED PRISM REC 6600 NW GR.****Description:**

Recessed luminaire model FIL + LED PRISM REC 6600 NW GR., LAMP brand. Made of satin grey painted extruded aluminium with prismatic polycarbonate diffuser. Model for MID-POWER LED, with neutral white colour temperature and control gear included. Glare rating <19 (for 4h, 8h 70/50/20). IP42, IK06 protection rating. Insulation class I. Photobiological safety group 0.

**Finish:** Gloss grey**Dimensions:** 1.743 x 70 x 70 mm**Weight:** 4.426 g**Installation:** Recessed**Recessing measures:** 1,755 x 78 x 85 mm**TECHNICAL SPECIFICATIONS:**

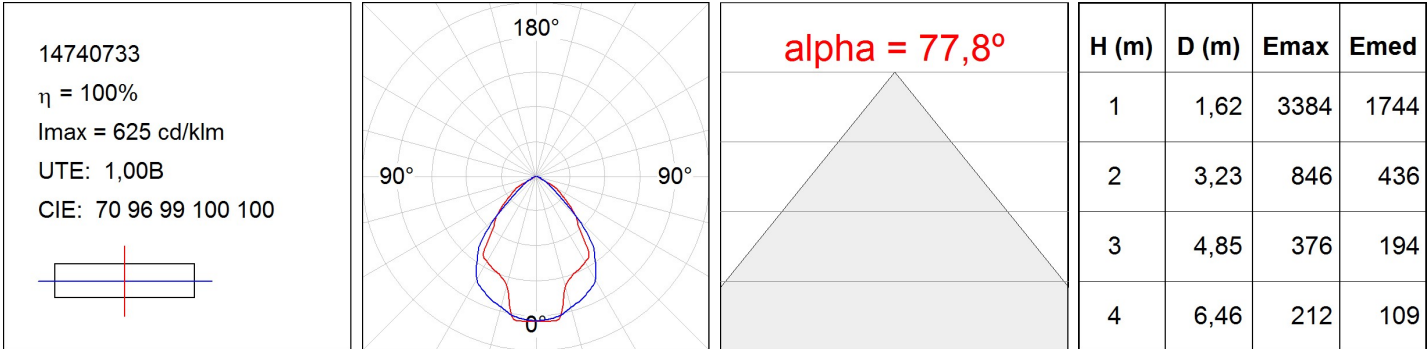
<b>Light output:</b>	5.452 lm	<b>°K :</b>	4000
<b>Plum:</b>	42,8W	<b>CRI :</b>	80
<b>Efficacy:</b>	127,4 lm/w	<b>MacAdam:</b>	3
<b>Type:</b>	MID POWER PHILIPS	<b>Power Supply:</b>	220-240V 50/60Hz
<b>LED Lifetime:</b>	50.000 L80 B10	<b>Gear:</b>	Electronic
<b>Power:</b>	41W		

**Light output tolerance +/- 10%**

14740733

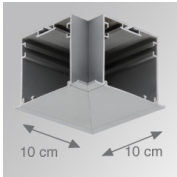
FIL + LED PRISM REC 6600 NW GR.

PHOTOMETRIC DATA :



ACCESORIES :

Assembly

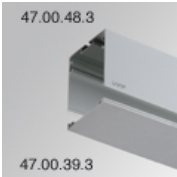


Product code:

4700070  
4700073

Description:

FIL + TECH ACC. REC 90° CORNER WH.  
FIL + TECH ACC. REC 90° CORNER GR.

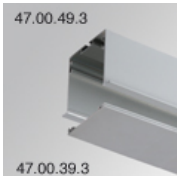


Product code:

4700390  
4700393

Description:

FIL + ACC. COVER X/MM WH.  
FIL + ACC. COVER X/MM GR.

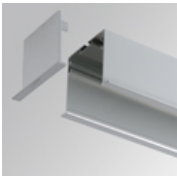


Product code:

4700490  
4700493

Description:

FIL70 ACC. REC PROFILE X/MM WH.  
FIL + ACC. REC PROFILE X/MM GR.



Product code:

4700680  
4700683

Description:

FIL + ACC. REC END COVER WH.  
FIL + ACC. REC END COVER GR.



Product code:

4806043

Description:

ACC. INTM JOINT



Product code:

9600990

Description:

ACC. ELECTROSTATICS WRIST STRAP

