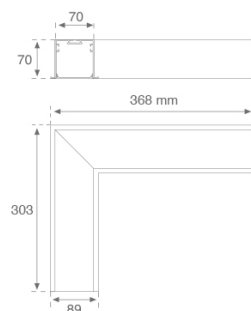
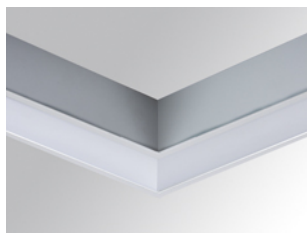


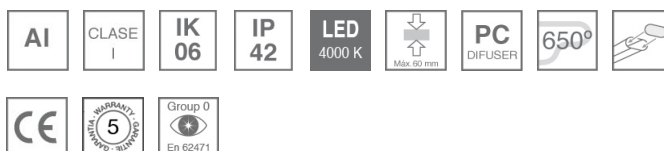
14740110

**FIL + LED CORNER OPAL REC 2200 NW WH.****Description:**

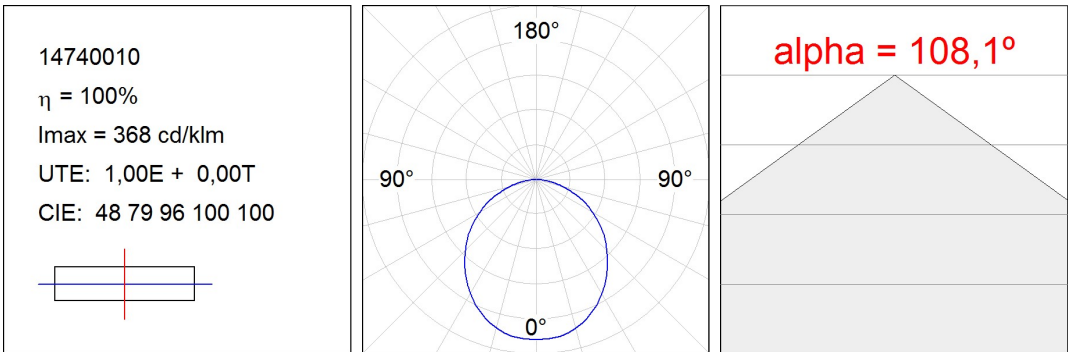
Recessed luminaire 90° corner model FIL + LED CORNER OPAL REC 2200 NW WH., LAMP brand. Made of matt white painted extruded aluminium with opal polycarbonate diffuser. Model for LED MID-POWER with neutral white colour temperature and control gear included. IP42, IK06 protection rating. Insulation class I. Photobiological safety group 0.

Finish: Matte white RAL 9010**Weight:** 1.500 g**Installation:** Recessed**TECHNICAL SPECIFICATIONS:**

Light output:	1.813 lm	°K :	4000
Plum:	16W	CRI :	80
Efficacy:	113,3 lm/w	MacAdam:	3
Type:	MID POWER PHILIPS	Power Supply:	220-240V 50/60Hz
LED Lifetime:	50000 L80 B10	Gear:	Electronic
Power:	14W		

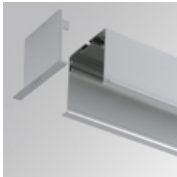
Light output tolerance +/- 10%

PHOTOMETRIC DATA :



ACCESORIES :

Assembly



Product code:
4700680
4700683

Description:
FIL + ACC. REC END COVER WH.
FIL + ACC. REC END COVER GR.



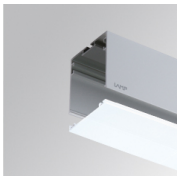
Product code: 4806043
Description: ACC. INTM JOINT



Product code: 9600990
Description: ACC. ELECTROSTATICS WRIST STRAP

ACCESORIES :

Optical



Product code: 4700400
Description: FIL + ACC. OPAL DIFFUSER X/MM