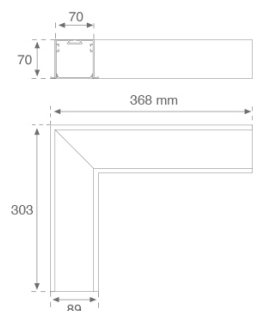
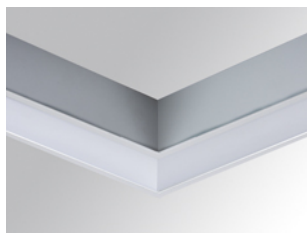


14740103

**FIL + LED CORNER OPAL REC 1300 NW GR.****Description:**

Recessed luminaire 90° corner model FIL + LED CORNER OPAL REC 1300 NW GR., LAMP brand. Made of satin grey painted extruded aluminium with opal polycarbonate diffuser. Model for LED MID-POWER with neutral white colour temperature and control gear included. IP42, IK06 protection rating. Insulation class I. Photobiological safety group 0.

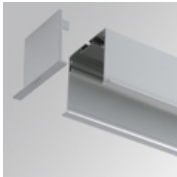
**Finish:** Gloss grey**Weight:** 1.500 g**Installation:** Recessed**TECHNICAL SPECIFICATIONS:**

<b>Light output:</b>	1.048 lm	<b>°K :</b>	4000
<b>Plum:</b>	10,1W	<b>CRI :</b>	80
<b>Efficacy:</b>	103,8 lm/w	<b>MacAdam:</b>	3
<b>Type:</b>	MID POWER PHILIPS	<b>Power Supply:</b>	220-240V 50/60Hz
<b>LED Lifetime:</b>	50000 L80 B10	<b>Gear:</b>	Electronic
<b>Power:</b>	9W		

**Light output tolerance +/- 10%**

ACCESORIES :

Assembly



**Product code:**  
4700680  
4700683

**Description:**  
FIL + ACC. REC END COVER WH.  
FIL + ACC. REC END COVER GR.



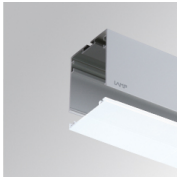
**Product code:** 4806043  
**Description:** ACC. INTM JOINT



**Product code:** 9600990  
**Description:** ACC. ELECTROSTATICS WRIST STRAP

ACCESORIES :

Optical



**Product code:** 4700400  
**Description:** FIL + ACC. OPAL DIFFUSER X/MM