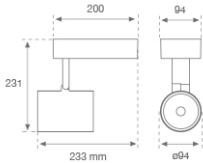


10844620



IMAG G2 SUR 3000 NW WFL WH.

Description:

Multi-directional for wall or ceiling mounting projector model IMAG G2 SUR 3000 NW WFL WH., LAMP brand. Manufactured with aluminium die casting and polycarbonate finished in texturized white. Passive dissipation for thermal management. Model for COB LED, with neutral white colour temperature and control gear included. High quality aluminium Wide Flood reflector. Insulation class II.

Finish: Texturised matt white RAL 9016

Weight: 1.482 g

Installation: Surface

TECHNICAL SPECIFICATIONS:

Light output:	3.035 lm	°K :	4000
Plum:	27,9W	CRI :	80
Efficacy:	108,7 lm/w	MacAdam:	3
Type:	COB PHILIPS	Power Supply:	220-240V 50/60Hz
LED Lifetime:	50.000 L80 B10	Gear:	Electronic
Power:	26W		

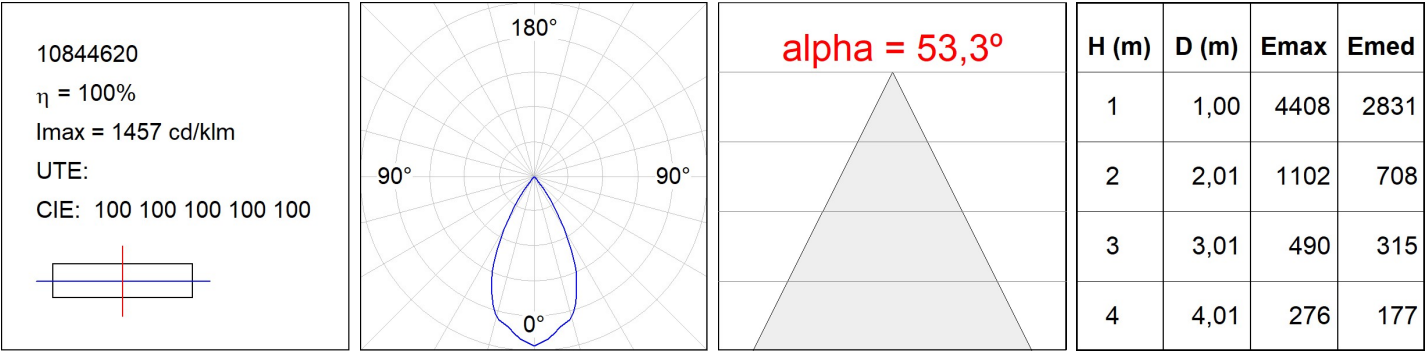
Light output tolerance +/- 10%



10844620

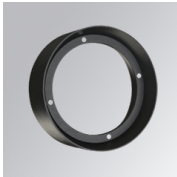
IMAG G2 SUR 3000 NW WFL WH.

PHOTOMETRIC DATA :



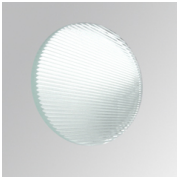
ACCESORIES :

Optical



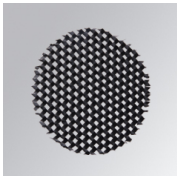
Product code:
9600252

Description:
LOOK/IMAG ACC. ADAPTOR



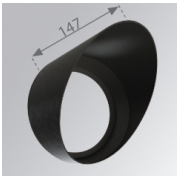
Product code:
9600262

Description:
LOOK/IMAG ACC. FRESNEL LENS



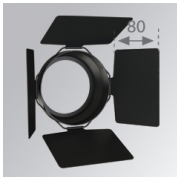
Product code:
9600272

Description:
LOOK/IMAG ACC. HONEYCOMB GRILLE



Product code:
9600282

Description:
LOOK/IMAG ACC. SCREEN



Product code:
9600292

Description:
LOOK/IMAG ACC. ANTI-GLARE LOUVRES



Product code:
9600372

Description:
LOOK/IMAG ACC. BUFFER

