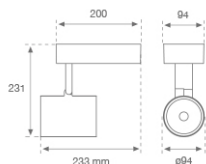


10843612

**IMAG G2 SUR 2000 WW WFL GRH.****Description:**

Multi-directional for wall or ceiling mounting projector model IMAG G2 SUR 2000 WW WFL GRH., LAMP brand. Manufactured with aluminium die casting and polycarbonate finished in texturized graphite. Passive dissipation for thermal management. Model for COB LED, with warm white colour temperature and control gear included. High quality aluminium Wide Flood reflector. Insulation class II.

Finish: Texturised graphite RAL 7021

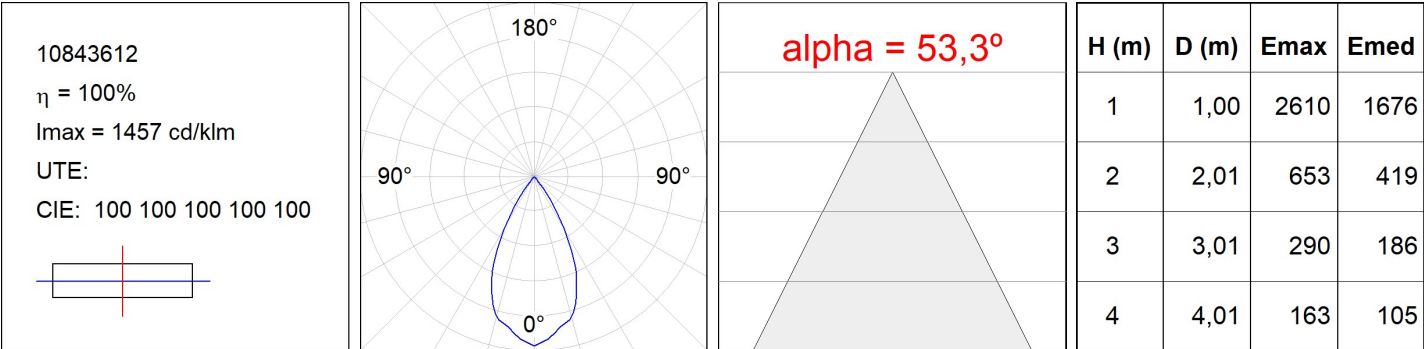
Weight: 1.482 g

Installation: Surface
TECHNICAL SPECIFICATIONS:

Light output:	1.797 lm	°K :	3000
Plum:	16,8W	CRI :	80
Efficacy:	106,9 lm/w	MacAdam:	3
Type:	COB PHILIPS	Power Supply:	220-240V 50/60Hz
LED Lifetime:	50.000 L80 B10	Gear:	Electronic
Power:	15W		

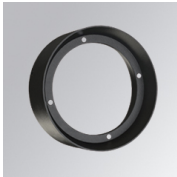
Light output tolerance +/- 10%


PHOTOMETRIC DATA :



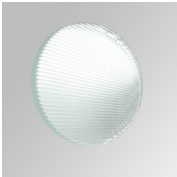
ACCESORIES :

Optical



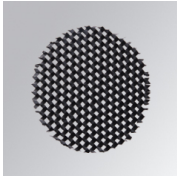
Product code:
9600252

Description:
LOOK/IMAG ACC. ADAPTOR



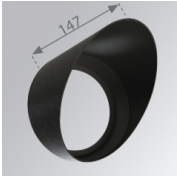
Product code:
9600262

Description:
LOOK/IMAG ACC. FRESNEL LENS



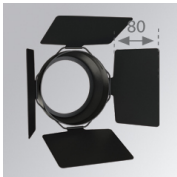
Product code:
9600272

Description:
LOOK/IMAG ACC. HONEYCOMB GRILLE



Product code:
9600282

Description:
LOOK/IMAG ACC. SCREEN



Product code:
9600292

Description:
LOOK/IMAG ACC. ANTI-GLARE LOUVRES



Product code:
9600372

Description:
LOOK/IMAG ACC. BUFFER

