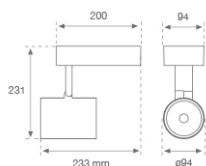


10843430

**IMAG G2 SUR 5000 WW MFL WH.****Description:**

Multi-directional for wall or ceiling mounting projector model IMAG G2 SUR 5000 WW MFL WH., LAMP brand. Manufactured with aluminium die casting and polycarbonate finished in texturized white. Passive dissipation for thermal management. Model for COB LED, with warm white colour temperature and control gear included. High quality aluminium Medium Flood reflector. Insulation class II.

**Finish:** Texturised matt white RAL 9016

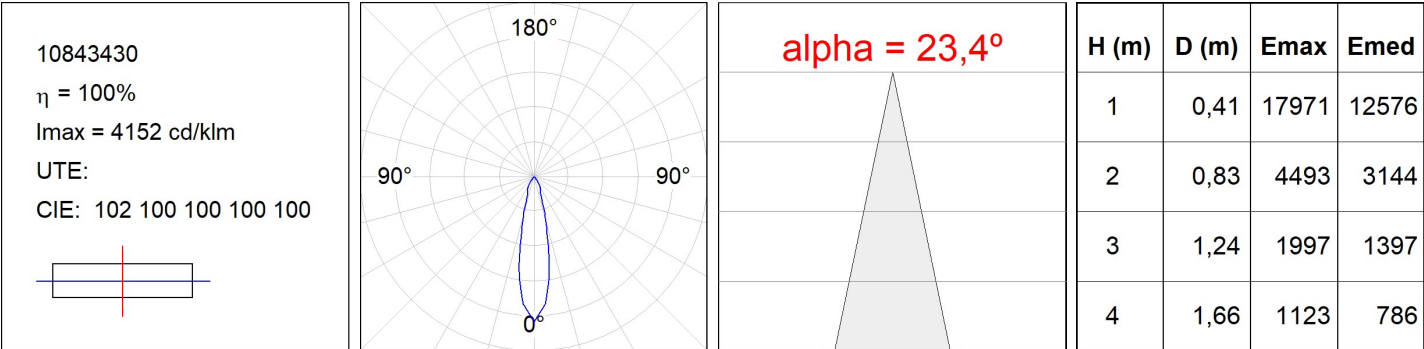
**Weight:** 1.556 g

**Installation:** Surface
**TECHNICAL SPECIFICATIONS:**

<b>Light output:</b>	4.345 lm	<b>°K :</b>	3000
<b>Plum:</b>	48W	<b>CRI :</b>	80
<b>Efficacy:</b>	90,5 lm/w	<b>MacAdam:</b>	3
<b>Type:</b>	COB PHILIPS	<b>Power Supply:</b>	220-240V 50/60Hz
<b>LED Lifetime:</b>	50.000 L70 B10	<b>Gear:</b>	Electronic
<b>Power:</b>	44W		

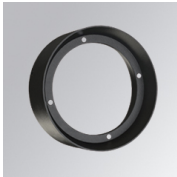
*Light output tolerance +/- 10%*


PHOTOMETRIC DATA :



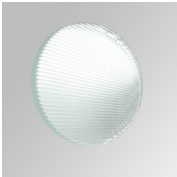
ACCESORIES :

Optical



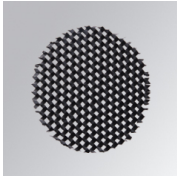
**Product code:**  
9600252

**Description:**  
LOOK/IMAG ACC. ADAPTOR



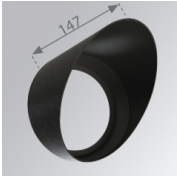
**Product code:**  
9600262

**Description:**  
LOOK/IMAG ACC. FRESNEL LENS



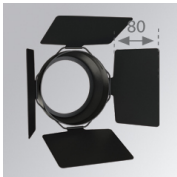
**Product code:**  
9600272

**Description:**  
LOOK/IMAG ACC. HONEYCOMB GRILLE



**Product code:**  
9600282

**Description:**  
LOOK/IMAG ACC. SCREEN



**Product code:**  
9600292

**Description:**  
LOOK/IMAG ACC. ANTI-GLARE LOUVRES



**Product code:**  
9600372

**Description:**  
LOOK/IMAG ACC. BUFFER

