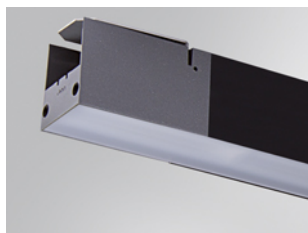


**BAZZ AIR**

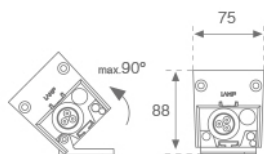
10241542



**BAZZ AIR OPAL 2M 8100 NW BK.**

**Description:**

Outdoor luminaire model BAZZ AIR OPAL 2M 8100 NW BK., LAMP brand. Made of matt black anodized extruded aluminium and opal polycarbonate diffuser. Model for MID-POWER LED, neutral white colour temperature and control gear included. IP67, IK10 protection rating. Insulation class I. It allows swivels between 0° and 90°.



**Finish:** Anodized matte black

**Dimensions:** 2.001 x 75 x 88 mm

**Weight:** 6.098 g

**Installation:** Surface

**TECHNICAL SPECIFICATIONS:**

<b>Light output:</b>	3.129 lm	<b>°K :</b>	4000
<b>Plum:</b>	66W	<b>CRI :</b>	80
<b>Efficacy:</b>	47,4 lm/w	<b>MacAdam:</b>	<3
<b>Type:</b>	MID POWER SAMSUNG	<b>Power Supply:</b>	220-240V 50/60Hz
<b>LED Lifetime:</b>	50.000 L80	<b>Gear:</b>	Electronic
<b>Power:</b>	63W		

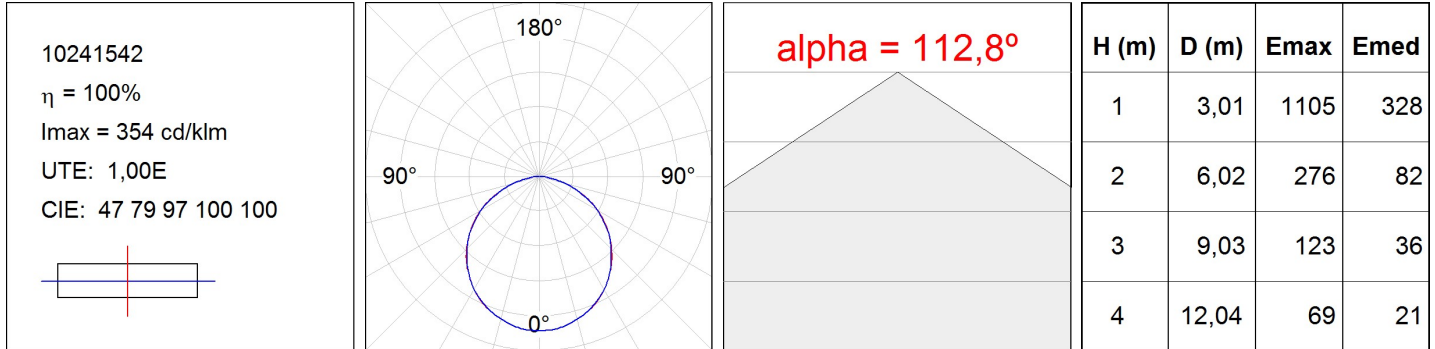
*Light output tolerance +/- 10%*



10241542

BAZZ AIR OPAL 2M 8100 NW BK.

**PHOTOMETRIC DATA :**



---

**ACCESSORIES :**

**Assembly**



**Product code:**

10200903

**Description:**

BAZZ AIR ACC. CONT LINE JOINT

---

**ACCESSORIES :**

**Suspension**



**Product code:**

9601313

**Description:**

ACC. QUICK STEEL CABLE 1M NK.

9601343

ACC. QUICK STEEL CABLE 4M NK.

---

**ACCESSORIES :**

**Support**

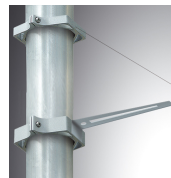


**Product code:**

9600053

**Description:**

ACC. ADJ EXTEN WALL ARM GR.



**Product code:**

9607473

**Description:**

BAZZ AIR ACC. Ø120 POLE 1CLAMP GR.

9607483

BAZZ AIR ACC. Ø120 POLE 2CLAMP GR.