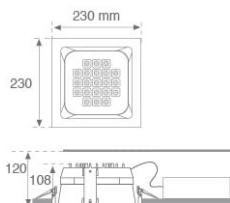


10081230

**DOMO SQ G2 3000 NW DALI****Description:**

Fixed square recessed DOMO SQ G2 3000 NW downlight, LAMP brand. With external ring in white lacquered die-cast aluminium. Model for MID-POWER LED, neutral white colour temperature and control gear included. Reflector designed by the optical concept named REDIL (Direct Emission LED Reflector), which consists of a two-phase reflection. Insulation class II.

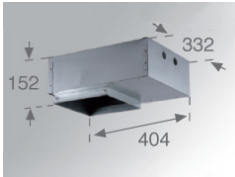
**Finish:** Matte white RAL 9010**Weight:** 1.550 g**Installation:** Recessed**TECHNICAL SPECIFICATIONS:**

|                      |                  |                      |                  |
|----------------------|------------------|----------------------|------------------|
| <b>Light output:</b> | 2.844 lm         | <b>°K :</b>          | 4000             |
| <b>Plum:</b>         | 32W              | <b>CRI :</b>         | 80               |
| <b>Efficacy:</b>     | 88,9 lm/w        | <b>MacAdam:</b>      | 3                |
| <b>Type:</b>         | MID POWER NICHIA | <b>Power Supply:</b> | 220-240V 50/60Hz |
| <b>LED Lifetime:</b> | 50.000 L90 B10   | <b>Gear:</b>         | Adjustable DALI  |
| <b>Power:</b>        | 30W              |                      |                  |

**Light output tolerance +/- 10%**

ACCESORIES :

Assembly



|                      |                                |
|----------------------|--------------------------------|
| <b>Product code:</b> | <b>Description:</b>            |
| 9000163              | DOMO SQ/KOMBIC SQ ACC. REC BOX |

ACCESORIES :

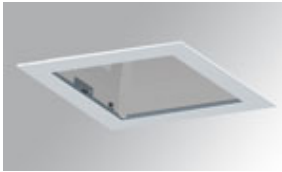
Optical



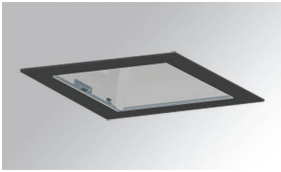
|                      |                                   |
|----------------------|-----------------------------------|
| <b>Product code:</b> | <b>Description:</b>               |
| 8606160              | DOMO SQ G2 ACC. INT OPAL DIFFUSER |



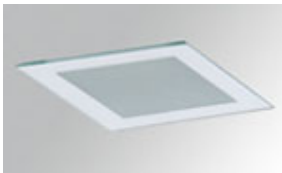
|                      |                             |
|----------------------|-----------------------------|
| <b>Product code:</b> | <b>Description:</b>         |
| 9006120              | DOMO SQ ACC. OPAL GLASS WH. |



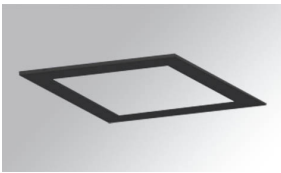
|                      |   |
|----------------------|---|
| <b>Product code:</b> | <b>Description:</b>                     |
| 9006140              | DOMO SQ/KOMBIC SQ ACC. TRANSP GLASS WH. |



|                      |   |
|----------------------|---|
| <b>Product code:</b> | <b>Description:</b>                     |
| 9006142              | DOMO SQ/KOMBIC SQ ACC. TRANSP GLASS BK. |



|                      |                                      |
|----------------------|--------------------------------------|
| <b>Product code:</b> | <b>Description:</b>                  |
| 9006183              | DOMO SQ/KUBIC ACC. OPAL MIRROR GLASS |



|                      |                                       |
|----------------------|---------------------------------------|
| <b>Product code:</b> | <b>Description:</b>                   |
| 9006202              | DOMO SQ/KOMBIC SQ ACC. DECO FRAME BK. |