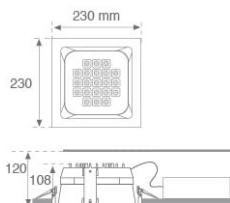


10041240

**DOMO SQ G2 4000 WW****Description:**

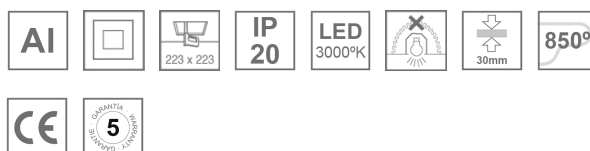
Fixed square recessed DOMO SQ G2 4000 WW downlight, LAMP brand. With external ring in white lacquered die-cast aluminium. Model for MID-POWER LED, warm white colour temperature and control gear included. Reflector designed by the optical concept named REDIL® (Direct Emission LED Reflector), which consists of a two-phase reflection. Insulation class II.

**Finish:** Matte white RAL 9010

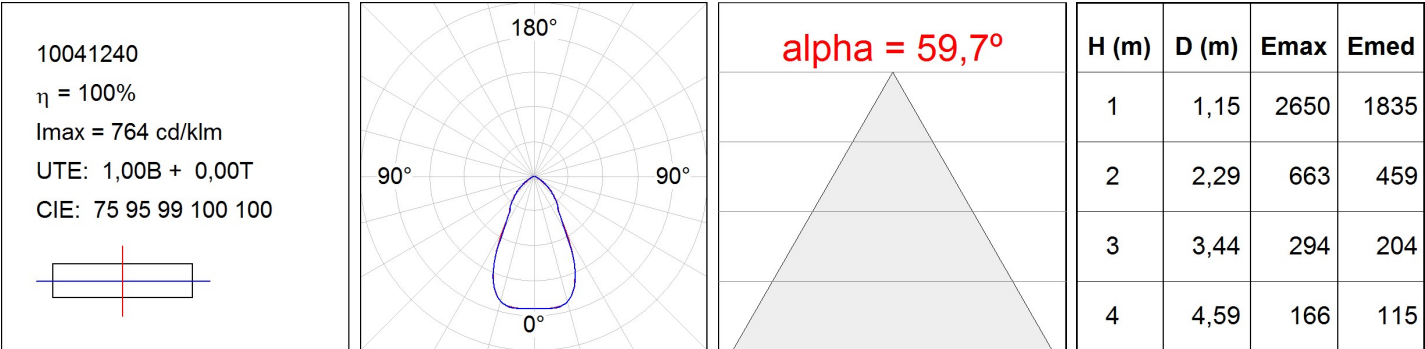
**Weight:** 1.628 g

**Installation:** Recessed
**TECHNICAL SPECIFICATIONS:**

<b>Light output:</b>	3.491 lm	<b>°K :</b>	3000
<b>Plum:</b>	40,5W	<b>CRI :</b>	80
<b>Efficacy:</b>	86,2 lm/w	<b>MacAdam:</b>	3
<b>Type:</b>	MID POWER NICHIA	<b>Power Supply:</b>	120-240V 50/60Hz
<b>LED Lifetime:</b>	50.000 L80 B10	<b>Gear:</b>	Electronic
<b>Power:</b>	37W		

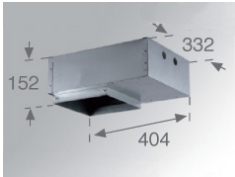
*Light output tolerance +/- 10%*


PHOTOMETRIC DATA :



ACCESORIES :

Assembly



<b>Product code:</b>	<b>Description:</b>
9000163	DOMO SQ/KOMBIC SQ ACC. REC BOX

ACCESORIES :

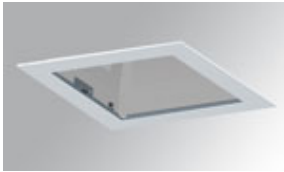
Optical



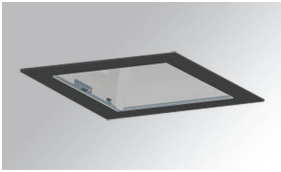
<b>Product code:</b>	<b>Description:</b>
8606160	DOMO SQ G2 ACC. INT OPAL DIFFUSER



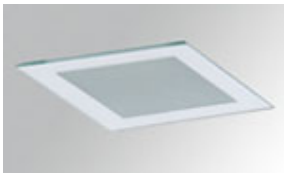
<b>Product code:</b>	<b>Description:</b>
9006120	DOMO SQ ACC. OPAL GLASS WH.



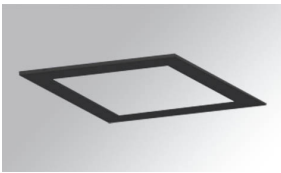
<b>Product code:</b>	<b>Description:</b>
9006140	DOMO SQ/KOMBIC SQ ACC. TRANSP GLASS WH.



<b>Product code:</b>	<b>Description:</b>
9006142	DOMO SQ/KOMBIC SQ ACC. TRANSP GLASS BK.



<b>Product code:</b>	<b>Description:</b>
9006183	DOMO SQ/KUBIC ACC. OPAL MIRROR GLASS



<b>Product code:</b>	<b>Description:</b>
9006202	DOMO SQ/KOMBIC SQ ACC. DECO FRAME BK.