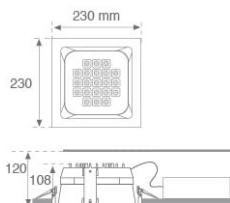


10041230

**DOMO SQ G2 3000 NW****Description:**

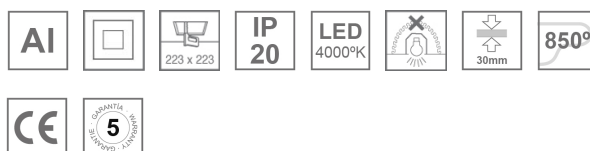
Fixed square recessed DOMO SQ G2 3000 NW downlight, LAMP brand. With external ring in white lacquered die-cast aluminium. Model for MID-POWER LED, neutral white colour temperature and control gear included. Reflector designed by the optical concept named REDIL® (Direct Emission LED Reflector), which consists of a two-phase reflection. Insulation class II.

Finish: Matte white RAL 9010

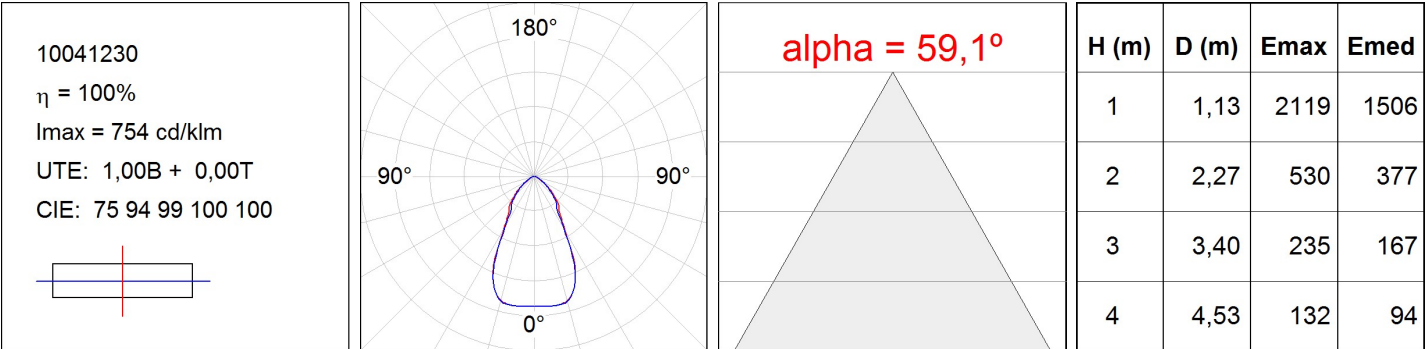
Weight: 1.550 g

Installation: Recessed
TECHNICAL SPECIFICATIONS:

Light output:	2.844 lm	°K :	4000
Plum:	32W	CRI :	80
Efficacy:	88,9 lm/w	MacAdam:	3
Type:	MID POWER NICHIA	Power Supply:	120-240V 50/60Hz
LED Lifetime:	50.000 L90 B10	Gear:	Electronic
Power:	29W		

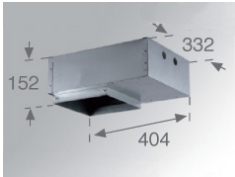
Light output tolerance +/- 10%


PHOTOMETRIC DATA :



ACCESORIES :

Assembly



Product code:	Description:
9000163	DOMO SQ/KOMBIC SQ ACC. REC BOX

ACCESORIES :

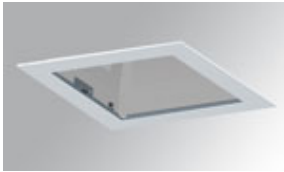
Optical



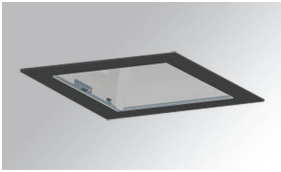
Product code:	Description:
8606160	DOMO SQ G2 ACC. INT OPAL DIFFUSER



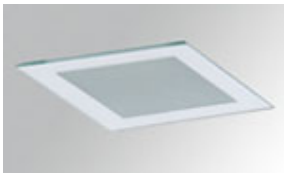
Product code:	Description:
9006120	DOMO SQ ACC. OPAL GLASS WH.



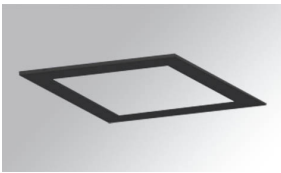
Product code:	Description:
9006140	DOMO SQ/KOMBIC SQ ACC. TRANSP GLASS WH.



Product code:	Description:
9006142	DOMO SQ/KOMBIC SQ ACC. TRANSP GLASS BK.



Product code:	Description:
9006183	DOMO SQ/KUBIC ACC. OPAL MIRROR GLASS



Product code:	Description:
9006202	DOMO SQ/KOMBIC SQ ACC. DECO FRAME BK.