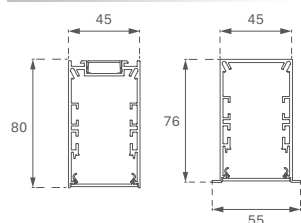


# Fil 45 WB



## Fil 45 WB

### DESCRIPTION:

Recessed, surface-mounted or suspended structure, model FIL45, 1120 or 1680 m long, with Lamp's Wellbeing technology. Made of recycled aluminium extrusion (80-85%).

Models with opal comfort diffuser made of translucent polycarbonate and optical sheet to control light distribution and glare control of light distribution and lower glare UGR19. Wellbeing LEDs in 3000 K or 4000 K, both with a low-emission spectral distribution in the 450 nm wavelength and circadian optimisation through low emissions in the 450 nm wavelength and optimized emissions in the 480nm wavelength, with a CRI of 97 and Ra above 50. On/Off or Dali with the possibility of control via Bluetooth LE. With IP20, IK07 degree of protection. Class of I. Group 0 photobiological safety.

### Available finishes:

- Black, white or grey

**Dimensions:** 45x80mm.

**Weight:** 3500 g

**INSTALLATION:** Recessed, surface or suspended

### FIL 45 WB

Family	Installation	Formats	Lm LED	Optic	K	Gear	Finishes
<b>F41</b>	<b>SF</b> Surface	<b>112</b> 1120m	<b>M0</b> 2320lm	<b>PR</b> Opal Comfort	<b>WB3</b> 3000 WB	<b>N</b> ON/OFF	<b>B</b> Black 02
	<b>RE</b> Recessed	<b>168</b> 1680m			<b>WB4</b> 4000 WB	<b>D</b> DALI	<b>W</b> White 02
							<b>G</b> Grey 01

Code configurator:

## LIGHT OUTPUT AND POWER

### FIL 45 WB

		11201m			16801m		
		K	CRI	W	lm Output	W	lm Output
M0	PR	3000	97	29,6	1559	55,1	2338
		4000	97	29,6	1878	55,1	2817

### FINISHES:

**B:** Black 02: ● RAL 9011 BLACK MATE

**W:** White 02: ○ RAL 9010 WHITE MATE

**G:** Grey 01: ● ANODIZED SILVER MATT

### TECHNICAL SPECIFICATIONS:

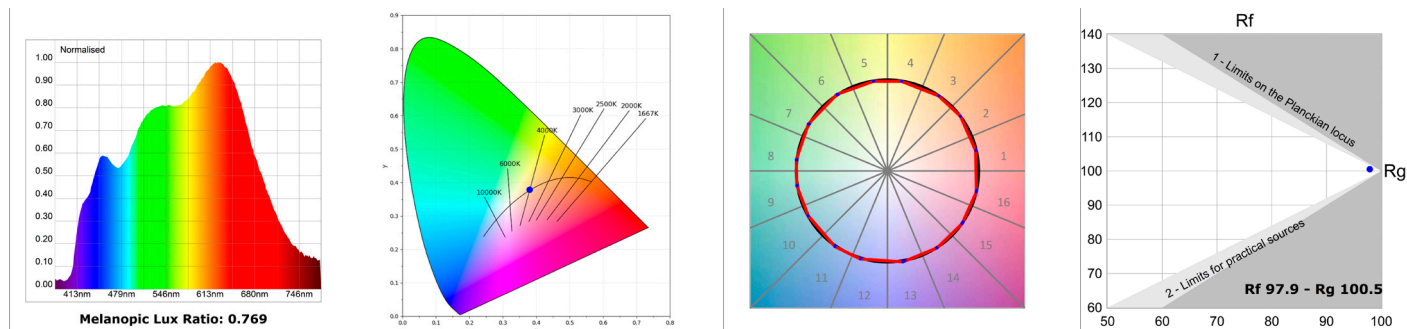


### QUALITY CERTIFICATES:

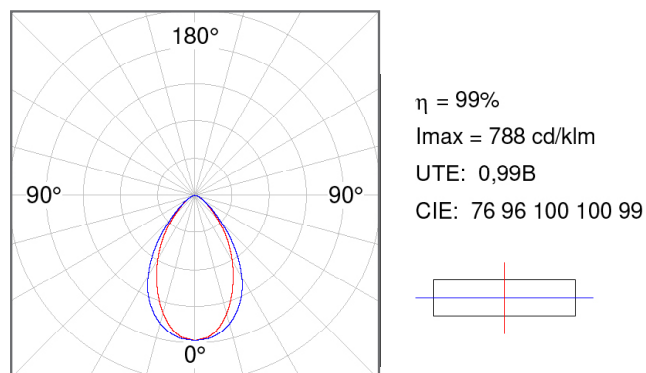


# Fil 45 WB

## PHOTOMETRIC DATA :



## Opal Comfort



# Fil 45 WB

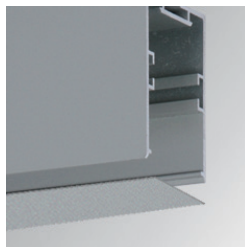
## ACCESSORIES:

**Product Code:**

F4COX/MMB

**Description:**

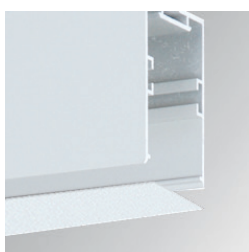
FIL 45 ACC. COVER X/MM BK.

**Product Code:**

F4COX/MMG

**Description:**

FIL 45 ACC. COVER X/MM GR.

**Product Code:**

F4COX/MMW

**Description:**

FIL 45 ACC. COVER X/MM WH.

**Product Code:**

F4FX50B

**Description:**

ACC. WALL BRACKET FIL45 50MM BK.

**Product Code:**

F4FX50G

**Description:**

ACC. WALL BRACKET FIL45 50MM GR.

**Product Code:**

F4FX50W

**Description:**

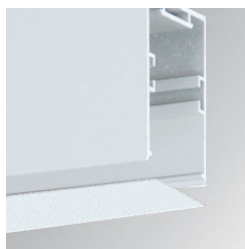
ACC. WALL BRACKET FIL45 50MM WH.

**Product Code:**

F4JO

**Description:**

FIL45 ACC. INTM JOINT B

**Product Code:**

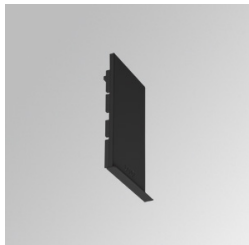
F4PRSUX/MMB

**Description:**

FIL 45 ACC. SUS PROFIL X/MM BK.

# Fil 45 WB

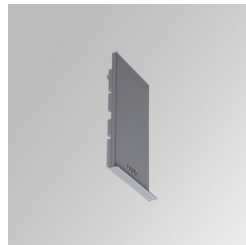
## ACCESSORIES:

**Product Code:**

F4SUECB

**Description:**

FIL45 ACC. SUR END COVER BK.

**Product Code:**

F4SUECG

**Description:**

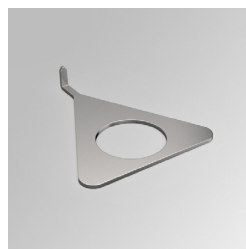
FIL45 ACC. SUR END COVER GR.

**Product Code:**

F4SUECW

**Description:**

FIL45 ACC. SUR END COVER WH.

**Product Code:**

F4TORFG

**Description:**

FIL45 ACC. TOOL REMOVE REFLECTOR

**Product Code:**F4SUCAEMFA1000NB  
F4SUCAEMFA4000NB**Description:**ACC. ELECMEC FIL45 QUICK SUSP 1M BK.  
ACC. ELECMEC FIL45 QUICK SUSP 4M BK.**Product Code:**F4SUCAEMFA1000NG  
F4SUCAEMFA4000NG**Description:**ACC. ELECMEC FIL45 QUICK SUSP 1M GR.  
ACC. ELECMEC FIL45 QUICK SUSP 4M GR.**Product Code:**F4SUCAEMFA1000NW  
F4SUCAEMFA4000NW**Description:**ACC. ELECMEC FIL45 QUICK SUSP 1M WH.  
ACC. ELECMEC FIL45 QUICK SUSP 4M WH.**Product Code:**F4SUCAWI1000DB  
F4SUCAWI4000DB**Description:**ACC. ELECMEC FIL45 QUICK SUSP 1M 5P BK.  
ACC. ELECMEC FIL45 QUICK SUSP 4M 5P BK.

## Fil 45 WB

---

### ACCESSORIES:



**Product Code:**

F4SUCAWI1000DG  
F4SUCAWI4000DG

**Description:**

ACC. ELECMEC FIL45 QUICK SUSP 1M 5P GR.  
ACC. ELECMEC FIL45 QUICK SUSP 4M 5P GR.

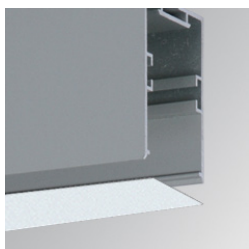


**Product Code:**

F4SUCAWI4000DW  
F4SUCAWI1000DW

**Description:**

ACC. ELECMEC FIL45 QUICK SUSP 1M 5P WH.  
ACC. ELECMEC FIL45 QUICK SUSP 4M 5P WH.



**Product Code:**

F4DIX/MMOP

**Description:**

FIL 45 ACC. OPAL DIFFUSER X/MM