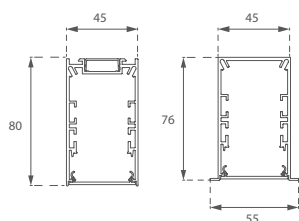


# Fil 45 CRI90

## Fil 45 CRI90



### DESCRIPTION:

Recessed, surface or suspended structure model FIL45 from 840 to 1680 mm in length from Lamp.  
 Available with medium flux option (2320 lm LED/m). Direct, direct-indirect and direct-indirect light distribution available. Possibility of making complex shapes with 90° horizontal bends. Made of recycled aluminium extrusion (80-85%).  
 Models with Tech or opal comfort diffuser consisting of a translucent polycarbonate diffuser and optical sheet for control of light distribution and lower glare UGR19.  
 Colour temperature available in 3000 K or 4000 K with CRI 90 / 80. Flicker free, On/Off or Dali controllable via Bluetooth LE. With IP20, IK07 degree of protection. Insulation class I. Group 0 photobiological safety.

**Dimensions:** 45x80mm

**Weight:** 2400-3500 g

**INSTALLATION:** Suspended

### FIL 45 CRI90 DIRECT

| Family | Installation | Formats    | Lm LED    | Optic           | CRI  | K         | Gear              | Finishes   |  |  |
|--------|--------------|------------|-----------|-----------------|------|-----------|-------------------|------------|--|--|
| F41    | SF Surface   | 084 840mm  | MO 2320lm | TE Tech         | 9 90 | 30 3000 K | N ON/OF<br>D DALI | B Black 02 |  |  |
|        |              | 112 1120mm |           |                 |      |           |                   | W White 02 |  |  |
|        | RE Recessed  | 140 1400mm |           | PR Opal Comfort |      | 40 4000 K |                   | G Grey 01  |  |  |
|        |              | 168 1680mm |           |                 |      |           |                   |            |  |  |
|        |              | 196 1960mm |           |                 |      |           |                   |            |  |  |
|        |              | 224 2240mm |           |                 |      |           |                   |            |  |  |
|        |              | 084 840mm  |           |                 |      |           |                   |            |  |  |
|        |              | 112 1120mm |           |                 |      |           |                   |            |  |  |
|        |              | 140 1400mm |           |                 |      |           |                   |            |  |  |
|        |              | 168 1680mm |           |                 |      |           |                   |            |  |  |

Code configurator:

### FIL 45 CRI90 DIRECT-INDIRECT

| Famille    | Installation      | Formats           | Lm LED           | Optique                         | IRC         | K                | Alimentation  | Finis             |
|------------|-------------------|-------------------|------------------|---------------------------------|-------------|------------------|---------------|-------------------|
| <b>F41</b> | <b>SF</b> Surface | <b>084</b> 840mm  | <b>MO</b> 2320lm | <b>IP</b> Dir./Ind Opal Comfort | <b>9</b> 90 | <b>30</b> 3000 K | <b>D</b> DALI | <b>B</b> Black 02 |
|            |                   | <b>112</b> 1120mm |                  |                                 |             |                  |               | <b>W</b> White 02 |
|            |                   | <b>140</b> 1400mm |                  |                                 |             |                  |               | <b>G</b> Grey 01  |
|            |                   | <b>168</b> 1680mm |                  |                                 |             |                  |               |                   |

Code configurator:

### FINISHES:

**B:** Black 02: ● RAL 9011 BLACK MATE

**W:** White 02: ○ RAL 9010 WHITE MATE

**G:** Grey 01: ● ANODIZED SILVER MATT

### TECHNICAL SPECIFICATIONS:



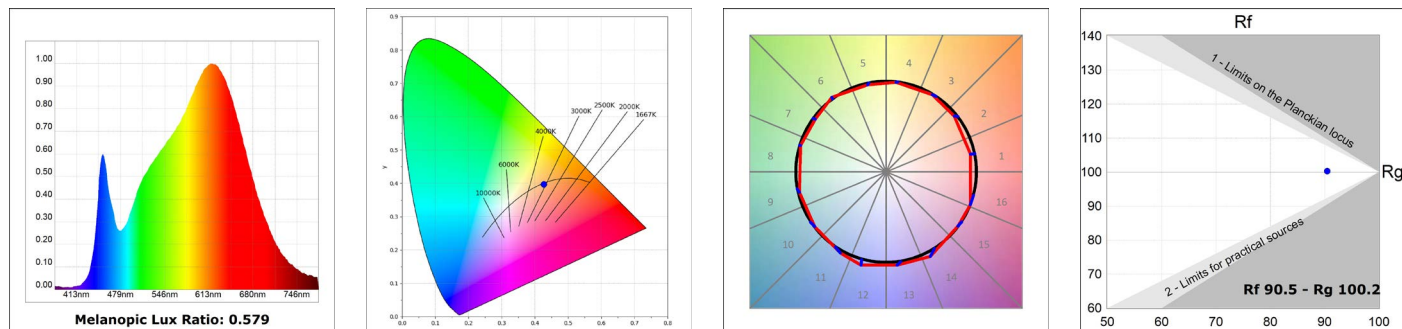
### QUALITY CERTIFICATES:



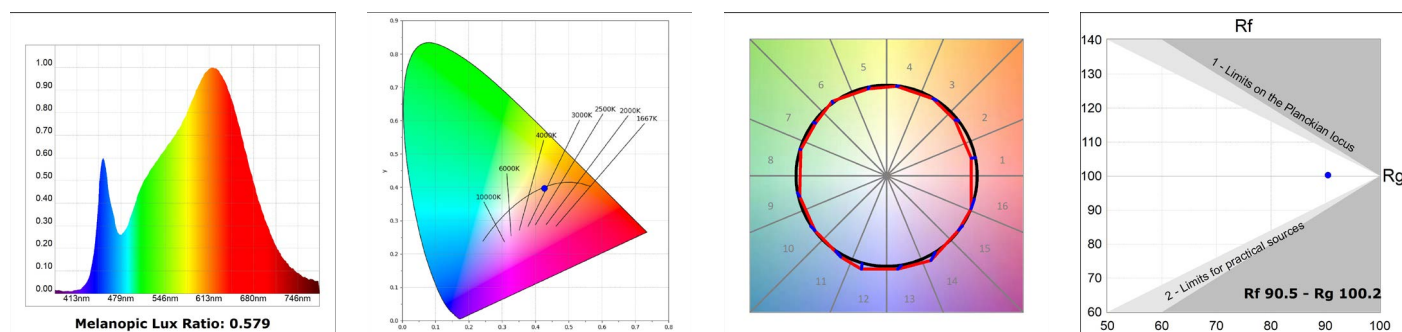
# Fil 45 CRI90

## PHOTOMETRIC DATA :

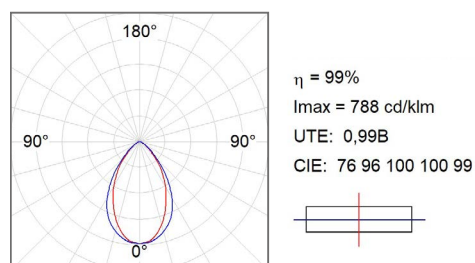
### Opal Comfort



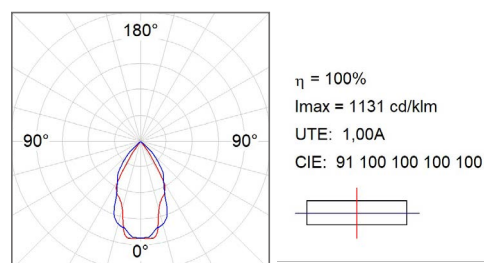
### Tech



### Opal Comfort



### Tech



# Fil 45 CRI90

## ACCESSORIES:



**Product Code:**

F4COX/MMB

**Description:**

FIL 45 ACC. COVER X/MM BK.



**Product Code:**

F4COX/MMG

**Description:**

FIL 45 ACC. COVER X/MM GR.

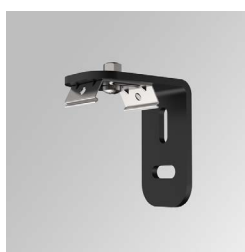


**Product Code:**

F4COX/MMW

**Description:**

FIL 45 ACC. COVER X/MM WH.



**Product Code:**

F4FX50B

**Description:**

ACC. WALL BRACKET FIL45 50MM BK.



**Product Code:**

F4FX50G

**Description:**

ACC. WALL BRACKET FIL45 50MM GR.



**Product Code:**

F4FX50W

**Description:**

ACC. WALL BRACKET FIL45 50MM WH.



**Product Code:**

F4JO

**Description:**

FIL45 ACC. INTM JOINT B



**Product Code:**

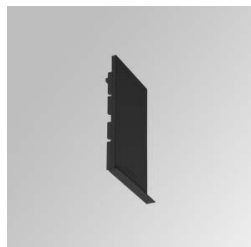
F4PRSUX/MMB

**Description:**

FIL 45 ACC. SUS PROFIL X/MM BK.

# Fil 45 CR90

## ACCESSORIES:

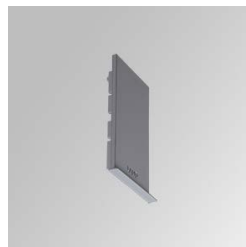


**Product Code:**

F4SUECB

**Description:**

FIL45 ACC. SUR END COVER BK.

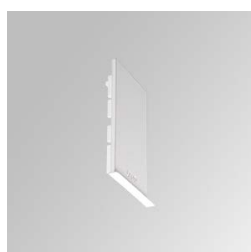


**Product Code:**

F4SUECG

**Description:**

FIL45 ACC. SUR END COVER GR.

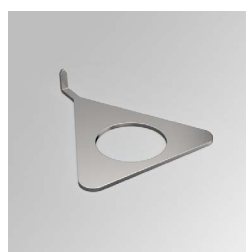


**Product Code:**

F4SUECW

**Description:**

FIL45 ACC. SUR END COVER WH.



**Product Code:**

F4TORFG

**Description:**

FIL45 ACC. TOOL REMOVE REFLECTOR



**Product Code:**

F4SUCAEMFA1000NB  
F4SUCAEMFA4000NB

**Description:**

ACC. ELECMEC FIL45 QUICK SUSP 1M BK.  
ACC. ELECMEC FIL45 QUICK SUSP 4M BK.



**Product Code:**

F4SUCAEMFA1000NG  
F4SUCAEMFA4000NG

**Description:**

ACC. ELECMEC FIL45 QUICK SUSP 1M GR.  
ACC. ELECMEC FIL45 QUICK SUSP 4M GR.



**Product Code:**

F4SUCAEMFA1000NW  
F4SUCAEMFA4000NW

**Description:**

ACC. ELECMEC FIL45 QUICK SUSP 1M WH.  
ACC. ELECMEC FIL45 QUICK SUSP 4M WH.



**Product Code:**

F4SUCAWI1000DB  
F4SUCAWI4000DB

**Description:**

ACC. ELECMEC FIL45 QUICK SUSP 1M 5P BK.  
ACC. ELECMEC FIL45 QUICK SUSP 4M 5P BK.

# Fil 45 CRI90

---

## ACCESSORIES:



**Product Code:**

F4SUCAWI1000DG  
F4SUCAWI4000DG

**Description:**

ACC. ELECMEC FIL45 QUICK SUSP 1M 5P GR.  
ACC. ELECMEC FIL45 QUICK SUSP 4M 5P GR.



**Product Code:**

F4SUCAWI4000DW  
F4SUCAWI1000DW

**Description:**

ACC. ELECMEC FIL45 QUICK SUSP 1M 5P WH.  
ACC. ELECMEC FIL45 QUICK SUSP 4M 5P WH.



**Product Code:**

F4DIX/MMOP

**Description:**

FIL 45 ACC. OPAL DIFFUSER X/MM