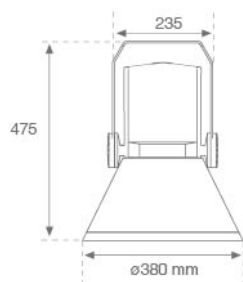


SHOT 380

7501573



SHOT 380 CL.I HIT G12 250W SSP GR.

Description:

Outdoor spotlight model SHOT 380 CL.I HIT G12 250W SSP GR., LAMP brand. Made of texturised grey lacquered aluminium injection and tempered glass, stainless steel screws and silicone joints. Model for HIT G12 250W lamp and electromagnetic control gear included. With Super Spot aluminium reflector. IP65, IK09 protection rating. Insulation class I.

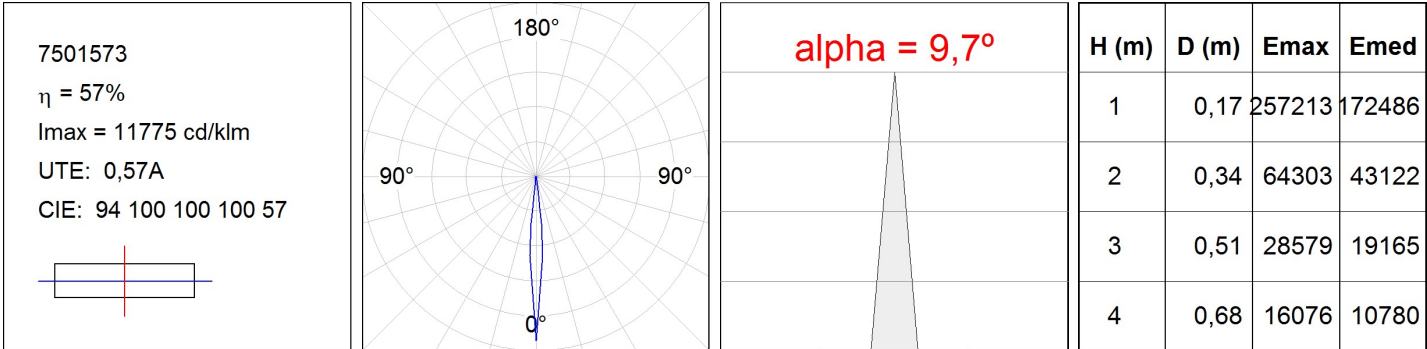
Finish: Texturised grey**Weight:** 12.800 g**Maximum surface exposed to wind:** 0.13 M2**Installation:** Surface**TECHNICAL SPECIFICATIONS:****Plum:** 269,5W**Type:** HIT**Power:** 250W**Lampholder:** G12**Power Supply:** 230V-50Hz**Gear:** Electromagnetic

SHOT 380

7501573

SHOT 380 CL.I HIT G12 250W SSP GR.

PHOTOMETRIC DATA :



ACCESORIES :

Support



Product code:

9601323

Description:

SHOT/FLUT ACC. IND LG FI Ø60 ARM



Product code:

9601333

Description:

SHOT/FLUT ACC. IND SH FI Ø60 ARM



Product code:

9601683

Description:

SHOT/FLUT ACC. IND LG INTM ARM



Product code:

9601693

Description:

SHOT/FLUT ACC. IND SH INTM ARM



Product code:

9601853

Description:

SHOT/FLUT ACC. LG WALL ARM



Product code:

9602323

Description:

SHOT/FLUT ACC. DB LG FI Ø60 ARM



Product code:

9602333

Description:

SHOT/FLUT ACC. DB SH FI Ø60 ARM



Product code:

9603323

Description:

SHOT/FLUT ACC. IND LG FI Ø76 ARM



Product code:

9603333

Description:

SHOT/FLUT ACC. IND SH FI Ø76 ARM



Product code:

9604323

Description:

SHOT/FLUT ACC. DB LG FI Ø76 ARM

SHOT 380



Product code:

9604333

Description:

SHOT/FLUT ACC. DB SH FI Ø76 ARM

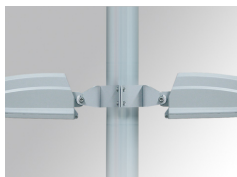


Product code:

9607353

Description:

SHOT/FLUT ACC. Ø60-135 POLE BRACKET GR.



Product code:

9607363

Description:

SHOT/FLUT ACC. DB Ø120-130 CLAMP GR.

9608363

SHOT/FLUT ACC. IND Ø120-130 CLAMP GR.

ACCESORIES :

Optical

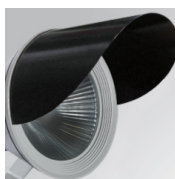


Product code:

7507742

Description:

SHOT 380 ACC. ANTIGLARE CIRCULAR



Product code:

7507752

Description:

SHOT 380 ACC. ANTIGLARE SCREEN

