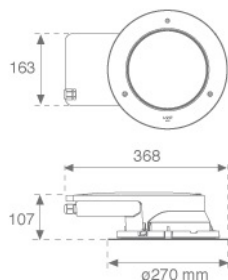


GA215SP840NI



GAP G2 1400 NW SP INOX

Description:

Outdoor recessed Downlight/Uplight model GAP G2 1400, LAMP brand. Made of injected aluminium, with a cataphoresis treatment, lacquered in black colour, tempered glass and exterior ring made of stainless steel AISI 304. Model with HI-POWER LED, with 4000K colour temperature, CRI 80 and control gear included. With Spot optics. It allows for a rotation from 0° to 90°, and a tilt between -30° and 30°. With a grades of protection IP67, IK10. Insulation class I. Lifetime: 60.000 L90 B10

Finish: Stainless steel AISI 304

Weight: 3.800 g

Installation: Floor recessed

TECHNICAL SPECIFICATIONS:

Light output:	1.130 lm	°K :	4000
Plum:	13W	CRI :	80
Efficacy:	86,9 lm/w	MacAdam:	3
Type:	HIGH POWER NICHIA	Power Supply:	220-240V 50/60Hz
LED Lifetime:	60.000 L90 B10 (Ta=25°C)	Gear:	Electronic
Power:	10W		

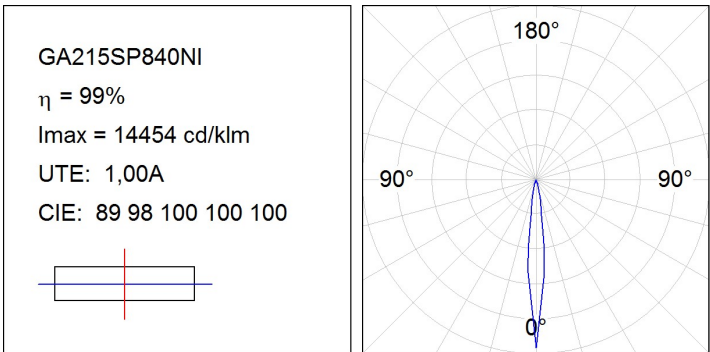
Light output tolerance +/- 10%



CUSTOM MADE OPTIONS:



PHOTOMETRIC DATA :



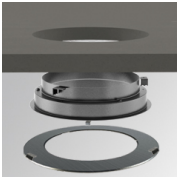
ACCESORIES :

Assembly



Product code:
GAREBOB

Description:
GAP ACC. REC BOX



Product code:
GARERIRDM

Description:
GAP ACC. REC CEILING RING

