

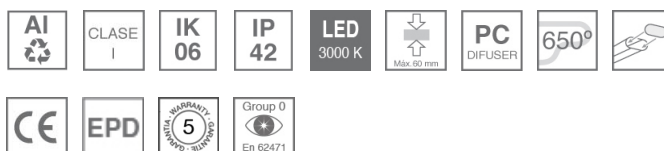
F71RE170LOOP830NW



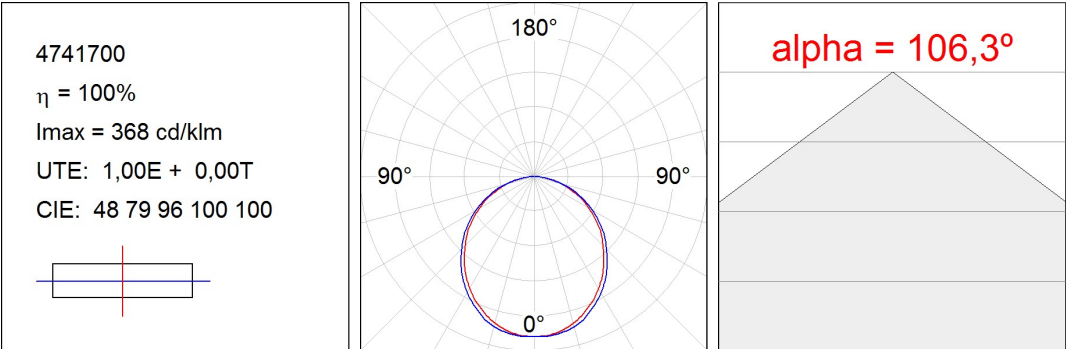
FIL 70 OPAL REC 3900 WW WH.

Description:

Recessed luminaire model FIL 70 OPAL REC 3900 WW WH., LAMP brand. Made of matt white painted extruded aluminium with opal polycarbonate diffuser. Model for LED MID-POWER with warm white colour temperature and control gear included. IP42, IK06 protection rating. Insulation class I. Photobiological safety group 0. Environmental Product Declaration - EPD@available, according to UNE-EN ISO 9001:2015 and UNE-EN ISO 14001:2015.

Finish: Matte white RAL 9010**Dimensions:** 1.743 x 89 x 70 mm**Weight:** 4.271 g**Installation:** Recessed**Recessing measures:** 1,755 x 78 x 85 mm**TECHNICAL SPECIFICATIONS:****Light output:** 2.988 lm**°K :** 3000**Plum:** 29,7W**CRI :** 80**Efficacy:** 100,6 lm/w**MacAdam:** 3**Type:** MID POWER LED**Power Supply:** 220-240V 50/60Hz**LED Lifetime:** 50.000 L80 B10 (Ta=25°C)**Gear:** Electronic**Power:** 25W**Light output tolerance +/- 10%****CUSTOM MADE OPTIONS:**

PHOTOMETRIC DATA :



ACCESORIES :

Assembly



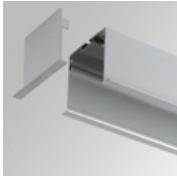
Product code:
ELWRST

Description:
ACC. ELECTROSTATICS WRIST STRAP



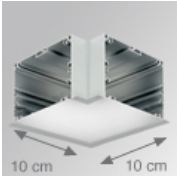
Product code:
F7JO

Description:
ACC. INTM JOINT



Product code:
F7REECW

Description:
FIL 70 ACC. REC END COVER WH.

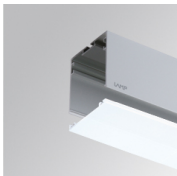


Product code:
F7REHCW

Description:
FIL 70 ACC. REC 90° CORNER WH.

ACCESORIES :

Optical



Product code:
F7DIX/MMOP

Description:
FIL 70 ACC. OPAL DIFFUSER X/MM

