

F71RE120HOOP840DG



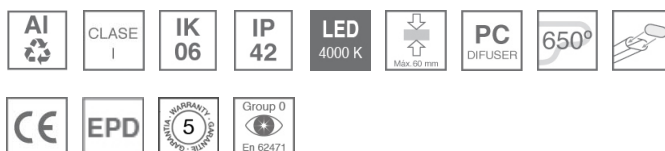
FIL 70 OPAL REC 4400 NW DALI GR.

Description:

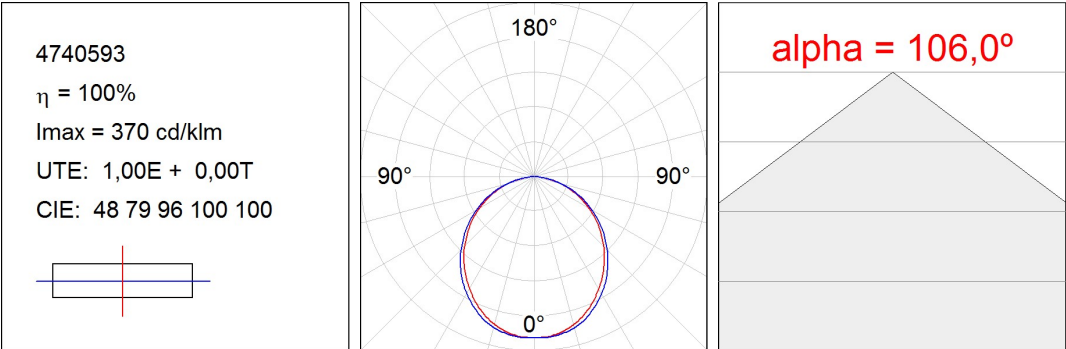
Recessed luminaire model FIL 70 OPAL REC 4400 NW DALI GR., LAMP brand. Made of satin grey painted extruded aluminium with polycarbonate opal diffuser. Model for LED MID-POWER with neutral white colour temperature and control gear DALI included. IP42, IK06 protection rating. Insulation class I. Photobiological safety group 0. Environmental Product Declaration - EPD available, according to UNE-EN ISO 9001:2015 and UNE-EN ISO 14001:2015.

Finish: Gloss grey**Dimensions:** 1.162 x 89 x 70 mm**Weight:** 2.667 g**Installation:** Recessed**Recessing measures:** 1,174 x 78 x 85 mm**TECHNICAL SPECIFICATIONS:**

Light output:	3.545 lm	°K :	4000
Plum:	30,7W	CRI :	80
Efficacy:	115,5 lm/w	MacAdam:	3
Type:	MID POWER LED	Power Supply:	220-240V 50/60Hz
LED Lifetime:	60.000 L80 B10 (Ta=25°C)	Gear:	Adjustable DALI
Power:	28W		

Light output tolerance +/- 10%**CUSTOM MADE OPTIONS:**

PHOTOMETRIC DATA :



ACCESORIES :

Assembly



Product code:
ELWRST

Description:
ACC. ELECTROSTATICS WRIST STRAP



Product code:
F7COSUX/MMG
F7COSUX/MMW

Description:
FIL 70 ACC. COVER X/MM GR.
FIL 70 ACC. COVER X/MM WH.



Product code:
F7JO

Description:
ACC. INTM JOINT



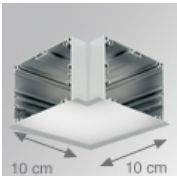
Product code:
F7PRREX/MMG
F7PRREX/MMW

Description:
FIL 70 ACC. REC PROFILE X/MM GR.
FIL 70 ACC. REC PROFILE X/MM WH.



Product code:
F7REECG
F7REECW

Description:
FIL 70 ACC. REC END COVER GR.
FIL 70 ACC. REC END COVER WH.

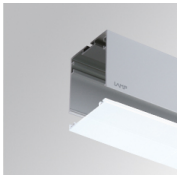


Product code:
F7REHCG
F7REHCW

Description:
FIL 70 ACC. REC 90° CORNER GR.
FIL 70 ACC. REC 90° CORNER WH.

ACCESORIES :

Optical



Product code:
F7DIX/MMOP

Description:
FIL 70 ACC. OPAL DIFFUSER X/MM

