

F71RE100LOTS840NG



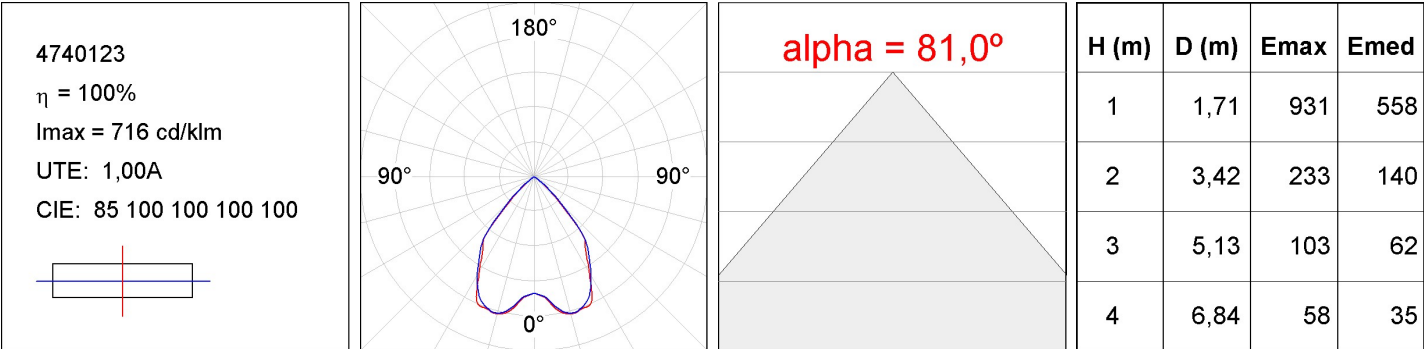
FIL 70 TECH REC 1M 1600 NW GR.

Description:

Recessed luminaire model FIL 70 TECH REC 1M 1600 NW GR., LAMP brand. Made of satin grey painted extruded aluminium. Model for MID-POWER LED with neutral white colour temperature and control gear included, Glare rating <19 (for 4h, 8h 70/50/20). which consists of a two-phase reflection. Insulation class I. Photobiological safety group 0. Environmental Product Declaration - EPD@available, according to UNE-EN ISO 9001:2015 and UNE-EN ISO 14001:2015.

Finish: Gloss grey**Dimensions:** 1.000 x 70 x 70 mm**Weight:** 2.124 g**Installation:** Recessed**Recessing measures:** 1,012 x 78 x 85 mm**TECHNICAL SPECIFICATIONS:****Light output:** 1.530 lm**°K :** 4000**Plum:** 14,5W**CRI :** 80**Efficacy:** 105,5 lm/w**MacAdam:** 3**UGR:** <19**Power Supply:** 220-240V 50/60Hz**Type:** MID POWER LED**Gear:** Electronic**LED Lifetime:** 50.000 L80 B10 (Ta=25°C)**Power:** 12W**Light output tolerance +/- 10%****CUSTOM MADE OPTIONS:**

PHOTOMETRIC DATA :



ACCESSORIES :
Assembly



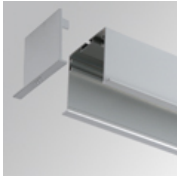
Product code:
ELWRST

Description:
ACC. ELECTROSTATICS WRIST STRAP



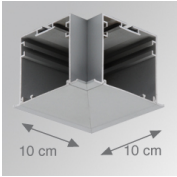
Product code:
F7JO

Description:
ACC. INTM JOINT



Product code:
F7REECG
F7REECW

Description:
FIL 70 ACC. REC END COVER GR.
FIL 70 ACC. REC END COVER WH.



Product code:
F7TEREHCG
F7TEREHCW

Description:
FIL 70 TECH ACC. REC 90° CORNER GR.
FIL 70 TECH ACC. REC 90° CORNER WH.

ACCESSORIES :
Optical



Product code:
DIOPST1000

Description:
ACC. DIF. SOFT TECH OPAL