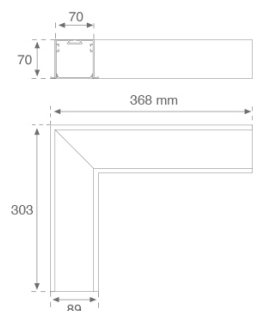
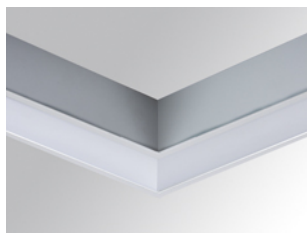


F71HCRELOOP840NG



FIL 70 CORNER OPAL REC 1300 NW GR.

Description:

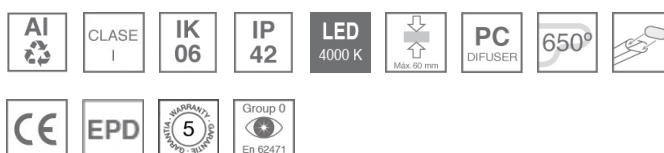
Recessed luminaire 90° corner model FIL 70 CORNER OPAL REC 1300 NW GR., LAMP brand. Made of satin grey painted extruded aluminium with opal polycarbonate diffuser. Model for LED MID-POWER with neutral white colour temperature and control gear included. IP42, IK06 protection rating. Insulation class I. Photobiological safety group 0. Environmental Product Declaration - EPD@available, according to UNE-EN ISO 9001:2015 and UNE-EN ISO 14001:2015.

Finish: Gloss grey

Weight: 1.500 g

Installation: Recessed
TECHNICAL SPECIFICATIONS:

Light output:	1.048 lm	°K :	4000
Plum:	10,1W	CRI :	80
Efficacy:	103,8 lm/w	MacAdam:	3
Type:	MID POWER LED	Power Supply:	220-240V 50/60Hz
LED Lifetime:	50.000 L80 B10 (Ta=25°C)	Gear:	Electronic
Power:	9W		

Light output tolerance +/- 10%
**CUSTOM MADE OPTIONS:**

ACCESORIES :

Assembly



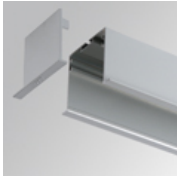
Product code:
ELWRST

Description:
ACC. ELECTROSTATICS WRIST STRAP



Product code:
F7JO

Description:
ACC. INTM JOINT

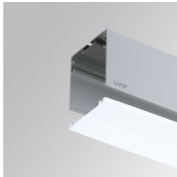


Product code:
F7REECG
F7REECW

Description:
FIL 70 ACC. REC END COVER GR.
FIL 70 ACC. REC END COVER WH.

ACCESORIES :

Optical



Product code:
F7DIX/MMOP

Description:
FIL 70 ACC. OPAL DIFFUSER X/MM