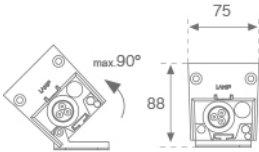
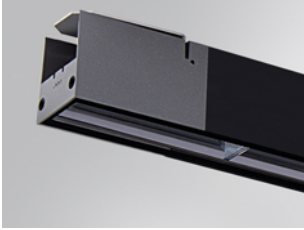


BAZZ AIR

BZ1SF200MOWW830NB



BAZZ AIR WASH 2M 8100 WW BK.

Description:

Outdoor luminaire model BAZZ AIR WASH 2M, LAMP brand. Made of extruded matt black aluminum, recycled at a rate of 80% and transparent polycarbonate diffuser. Model for MID-POWER LED, 3000K colour temperature, CRI 80 and control gear included. With a asymmetric metallised mat polycarbonate reflector. IP67, IK10 protection rating. Insulation class I. It allows swivels between 0° and 90°. Lifetime: 50. 000 L80. BUG Rate: B2 U1 G1, ULOR 0%.

Finish: Anodized matte black

Dimensions: 2.001 x 75 x 88 mm

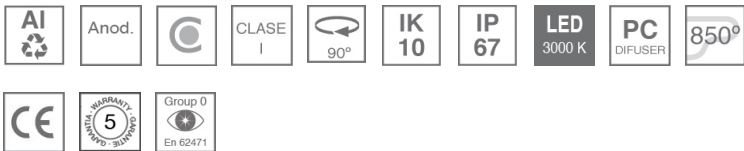
Weight: 6.698 g

Installation: Surface

TECHNICAL SPECIFICATIONS:

| | | | |
|---------------|----------------------|---------------|------------------|
| Light output: | 5.051 lm | °K : | 3000 |
| Plum: | 77W | CRI : | 80 |
| Efficacy: | 65,6 lm/w | MacAdam: | <3 |
| Type: | MID POWER LED | Power Supply: | 220-240V 50/60Hz |
| LED Lifetime: | 50.000 L80 (Ta=25°C) | Gear: | Electronic |
| Power: | 75W | | |

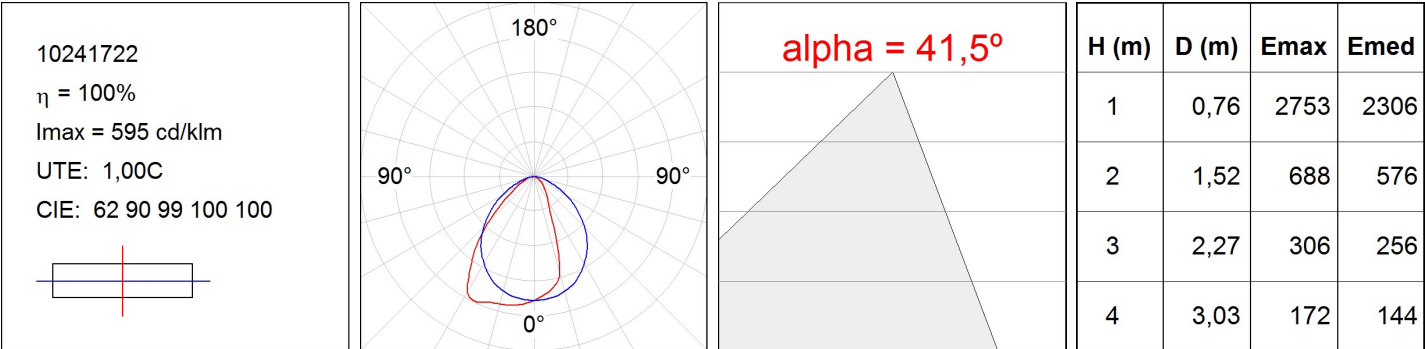
Light output tolerance +/- 10%



CUSTOM MADE OPTIONS:



PHOTOMETRIC DATA :



ACCESORIES :

Assembly



Product code:

BZJO

Description:

BAZZ AIR ACC. CONT LINE JOINT

ACCESORIES :

Suspension



Product code:

SUWIDE1000G

SUWIDE4000G

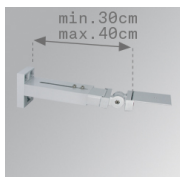
Description:

ACC. QUICK STEEL CABLE 1M NK.

ACC. QUICK STEEL CABLE 4M NK.

ACCESORIES :

Support



Product code:

ARROEX40G

Description:

ACC. ADJ EXTEN WALL ARM GR.



Product code:

BZSFCL1

BZSFCL2

Description:

BAZZ AIR ACC. Ø120 POLE 1CLAMP GR.

BAZZ AIR ACC. Ø120 POLE 2CLAMP GR.