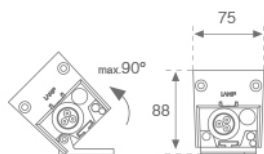
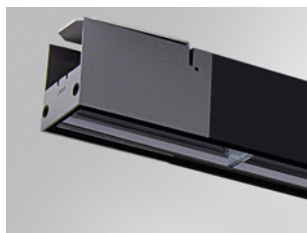


BZ1SF100MOSY840NB



BAZZ AIR SYM 1M 4200 NW BK.

Description:

Outdoor luminaire model BAZZ AIR SYM 1M, LAMP brand. Made of extruded matt black aluminum, recycled at a rate of 80% and transparent polycarbonate diffuser. Model for MID-POWER LED, 4000K colour temperature, CRI 80 and control gear included. With a symmetric metallised mat polycarbonate reflector. IP67, IK10 protection rating. Insulation class I. It allows swivels between 0° and 90°. Lifetime: 50.000 L80. BUG Rate: B2 U1 G1, ULOR 0%.

Finish: Anodized matte black

Dimensions: 1.008 x 75 x 88 mm

Weight: 3.730 g

Installation: Surface

TECHNICAL SPECIFICATIONS:

Light output:	4.149 lm	°K :	4000
Plum:	40W	CRI :	80
Efficacy:	103,7 lm/w	MacAdam:	<3
Type:	MID POWER LED	Power Supply:	220-240V 50/60Hz
LED Lifetime:	50.000 L80 (Ta=25°C)	Gear:	Electronic
Power:	37W		

Light output tolerance +/- 10%


CUSTOM MADE OPTIONS:



ACCESORIES :

Assembly



Product code:
BZJO

Description:
BAZZ AIR ACC. CONT LINE JOINT

ACCESORIES :

Suspension



Product code:
SUWIDE1000G
SUWIDE4000G

Description:
ACC. QUICK STEEL CABLE 1M NK.
ACC. QUICK STEEL CABLE 4M NK.

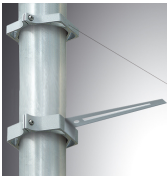
ACCESORIES :

Support



Product code:
ARROEX40G

Description:
ACC. ADJ EXTEN WALL ARM GR.



Product code:
BZSFCL1
BZSFCL2

Description:
BAZZ AIR ACC. Ø120 POLE 1CLAMP GR.
BAZZ AIR ACC. Ø120 POLE 2CLAMP GR.