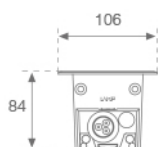
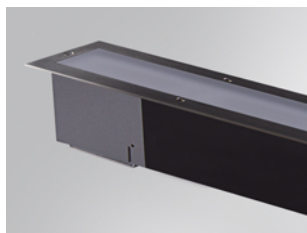


BZ1RE200MOOP840NB



BAZZ REC OPAL 2M 8100 NW

Description:

Outdoor recessed luminaire model BAZZ REC OPAL 2M 8100 NW, LAMP brand. Made of extruded matt black aluminum, recycled at a rate of 80%. AISI304 stainless steel frame and opal tempered glass. Model for MID-POWER LED, 4000K colour temperature, CRI 80 and control gear included. IP67, IK07 protection rating. Insulation class I. Lifetime: 50.000 L80 B10

Finish: Anodized matte black

Dimensions: 2.036 x 106 x 84 mm

Weight: 9.286 g

Installation: Floor recessed

TECHNICAL SPECIFICATIONS:

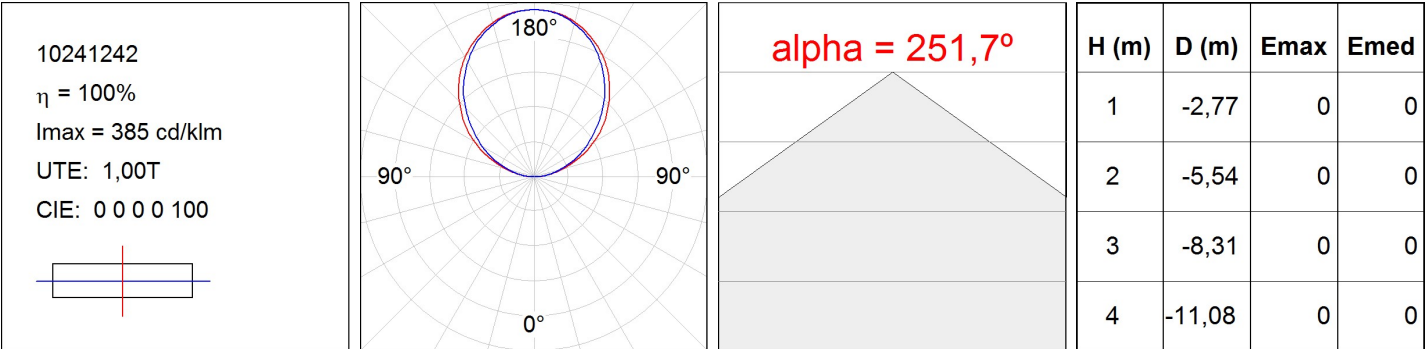
Light output:	3.209 lm	°K :	4000
Plum:	66W	CRI :	80
Efficacy:	48,6 lm/w	MacAdam:	<3
Type:	MID POWER LED	Power Supply:	220-240V 50/60Hz
LED Lifetime:	50.000 L80 B10 (Ta=25°C)	Gear:	Electronic
Power:	63W		

Light output tolerance +/- 10%


CUSTOM MADE OPTIONS:



PHOTOMETRIC DATA :



ACCESORIES :

Assembly



Product code:

BZREBO2000

Description:

BAZZ ACC. 2M REC BOX



Product code:

CT3P68G

Description:

ACC. IP68 Ø8-10MM CONNECTOR



Product code:

CT3P68O

Description:

ACC. IP68 Ø6,5-12MM CONNECTOR