

FIL LED

14741573 FIL LED G2 PRISM REC 6000 WW GR.



Description:

Recessed luminaire model FIL LED G2 PRISM REC 6000 WW GR., LAMP brand. Made of satin grey painted extruded aluminium with prismatic polycarbonate diffuser. Model for MID-POWER LED, warm white colour temperature and control gear included. With a IP42, IK07 protection rating. Insulation class I.

Finish: Gloss grey

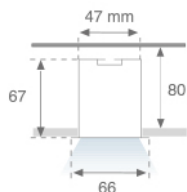
Dimensions: 1.137 x 66 x 67 mm

Weight: 2.166 g

IEE : A++

Installation: Recessed

Recessing measures: 1,147 x 52 x 80 mm



Lamp:

Type: MID POWER TRIDONIC

°K : 3000

LED Lifetime: 50000 L70 B10

CRI : 80

Power: 37W

MacAdam: 3

Electrical features:

Gear: Electronic

Power Supply: 220-240V 50-60Hz

Plum: 40.6W

Technical features:



Quality certificates:

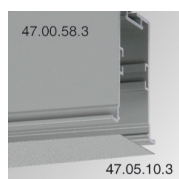


Photometrical data:

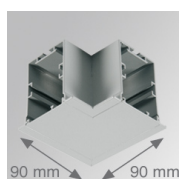
H (m)	D (m)	E _{max}	E _{med}	Diagram	Beam Spread	Beam Angle
1	1,46	2028	1144			<p>14741573 $\eta = 100\%$ $I_{max} = 529 \text{ cd/klm}$ UTE: 1,00D + 0,00T CIE: 59 86 97 100 100</p>
2	2,92	507	286			
3	4,38	225	127			
4	5,84	127	71			

Light output: 3.838 lm **Efficacy:** 94,5 lm/w

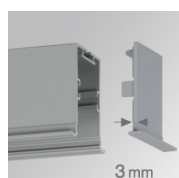
Assembly



Product code:	Description:
4700580	FIL ACC. REC PROFILE X/MM WH.
4700583	FIL ACC. REC PROFILE X/MM GR.
4705100	FIL ACC. COVER X/MM WH.
4705103	FIL ACC. COVER X/MM GR.



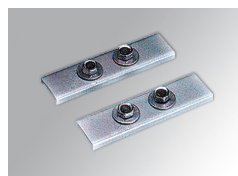
Product code:	Description:
4705210	FIL ACC. REC 90° CORNER WH.
4705213	FIL ACC. REC 90° CORNER GR.



Product code:	Description:
4706450	FIL ACC. REC END COVER WH.
4706453	FIL ACC. REC END COVER GR.



Product code:	Description:
9600990	ACC. ELECTROSTATICS WRIST STRAP



Product code:	Description:
9606010	ACC. INTM JOINT B

Optical



Product code:	Description:
4700590	FIL ACC. OPAL DIFFUSER X/MM