

FIL LED

14740583 **FIL LED G2 PRISM REC 9200 NW GR.**



Description:

Recessed luminaire model FIL LED G2 PRISM REC 9200 NW GR., LAMP brand. Made of satin grey painted extruded aluminium with prismatic polycarbonate diffuser. Model for MID-POWER LED, neutral white colour temperature and control gear included. With a IP42, IK07 protection rating. Insulation class I.

Finish: Gloss grey

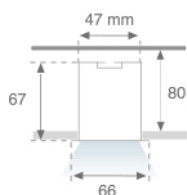
Dimensions: 1.700 x 66 x 67 mm

Weight: 2.860 g

IEE : A++

Installation: Recessed

Recessing measures: 1,710 x 52 x 80 mm



Lamp:

Type: MID POWER TRIDONIC

°K : 4000

LED Lifetime: 50000 L70 B10

CRI : 80

Power: 55W

MacAdam: 3

Electrical features:

Gear: Electronic

Power Supply: 220-240V 50-60Hz

Plum: 60.4W

Technical features:

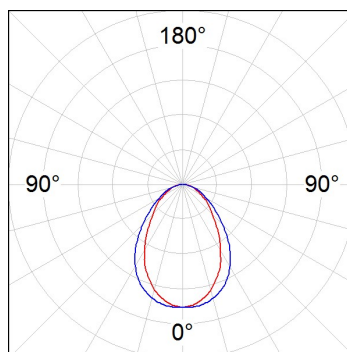
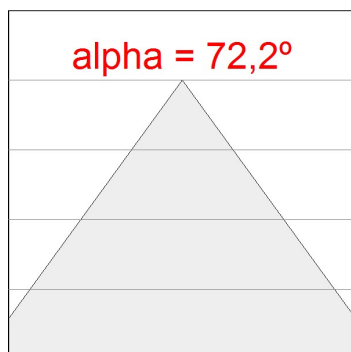


Quality certificates:



Photometrical data:

H (m)	D (m)	E _{max}	E _{med}
1	1,46	3208	1810
2	2,92	802	452
3	4,38	356	201
4	5,84	201	113



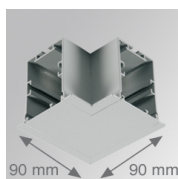
14740583
 $\eta = 100\%$
 $I_{max} = 529 \text{ cd/klm}$
 UTE: 1,00D + 0,00T
 CIE: 59 86 97 100 100

Light output: 6.074 lm **Efficacy:** 100,6 lm/w

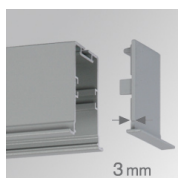
Assembly



Product code:	Description:
4700580	FIL ACC. REC PROFILE X/MM WH.
4700583	FIL ACC. REC PROFILE X/MM GR.
4705100	FIL ACC. COVER X/MM WH.
4705103	FIL ACC. COVER X/MM GR.



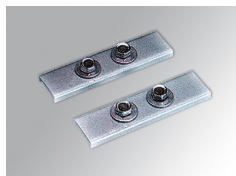
Product code:	Description:
4705210	FIL ACC. REC 90° CORNER WH.
4705213	FIL ACC. REC 90° CORNER GR.



Product code:	Description:
4706450	FIL ACC. REC END COVER WH.
4706453	FIL ACC. REC END COVER GR.

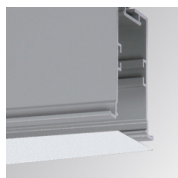


Product code:	Description:
9600990	ACC. ELECTROSTATICS WRIST STRAP



Product code:	Description:
9606010	ACC. INTM JOINT B

Optical



Product code:	Description:
4700590	FIL ACC. OPAL DIFFUSER X/MM