

FIL LED

14740563 **FIL LED G2 PRISM REC 4600 NW GR.**



Description:

Recessed luminaire model FIL LED G2 PRISM REC 4600 NW GR., LAMP brand. Made of satin grey painted extruded aluminium with prismatic polycarbonate diffuser. Model for MID-POWER LED, neutral white colour temperature and control gear included. With a IP42, IK07 protection rating. Insulation class I.

Finish: Gloss grey

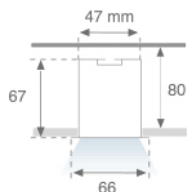
Dimensions: 1.700 x 66 x 67 mm

Weight: 2.860 g

IEE : A++

Installation: Recessed

Recessing measures: 1,710 x 52 x 80 mm



Lamp:

Type: MID POWER TRIDONIC

°K : 4000

LED Lifetime: 50000 L80 B10

CRI : 80

Power: 28W

MacAdam: 3

Electrical features:

Gear: Electronic

Power Supply: 220-240V 50-60Hz

Plum: 32.2W

Technical features:

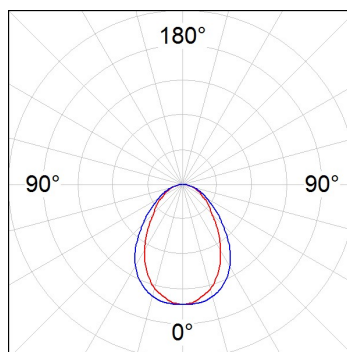
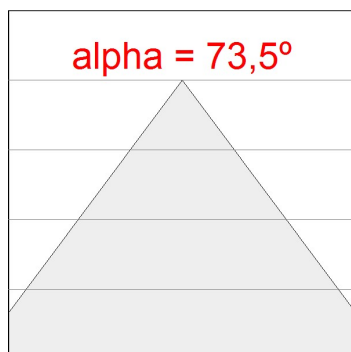


Quality certificates:



Photometrical data:

H (m)	D (m)	E _{max}	E _{med}
1	1,49	1662	930
2	2,99	416	233
3	4,48	185	103
4	5,97	104	58



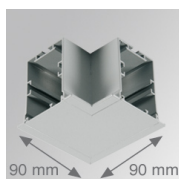
14740563
 $\eta = 100\%$
 $I_{max} = 516 \text{ cd/klm}$
 UTE: 1,00D + 0,00T
 CIE: 59 85 97 100 100

Light output: 3.225 lm **Efficacy:** 100,2 lm/w

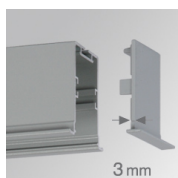
Assembly



Product code:	Description:
4700580	FIL ACC. REC PROFILE X/MM WH.
4700583	FIL ACC. REC PROFILE X/MM GR.
4705100	FIL ACC. COVER X/MM WH.
4705103	FIL ACC. COVER X/MM GR.



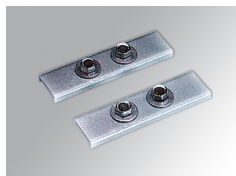
Product code:	Description:
4705210	FIL ACC. REC 90° CORNER WH.
4705213	FIL ACC. REC 90° CORNER GR.



Product code:	Description:
4706450	FIL ACC. REC END COVER WH.
4706453	FIL ACC. REC END COVER GR.

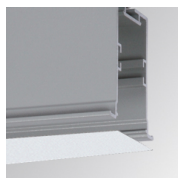


Product code:	Description:
9600990	ACC. ELECTROSTATICS WRIST STRAP



Product code:	Description:
9606010	ACC. INTM JOINT B

Optical



Product code:	Description:
4700590	FIL ACC. OPAL DIFFUSER X/MM